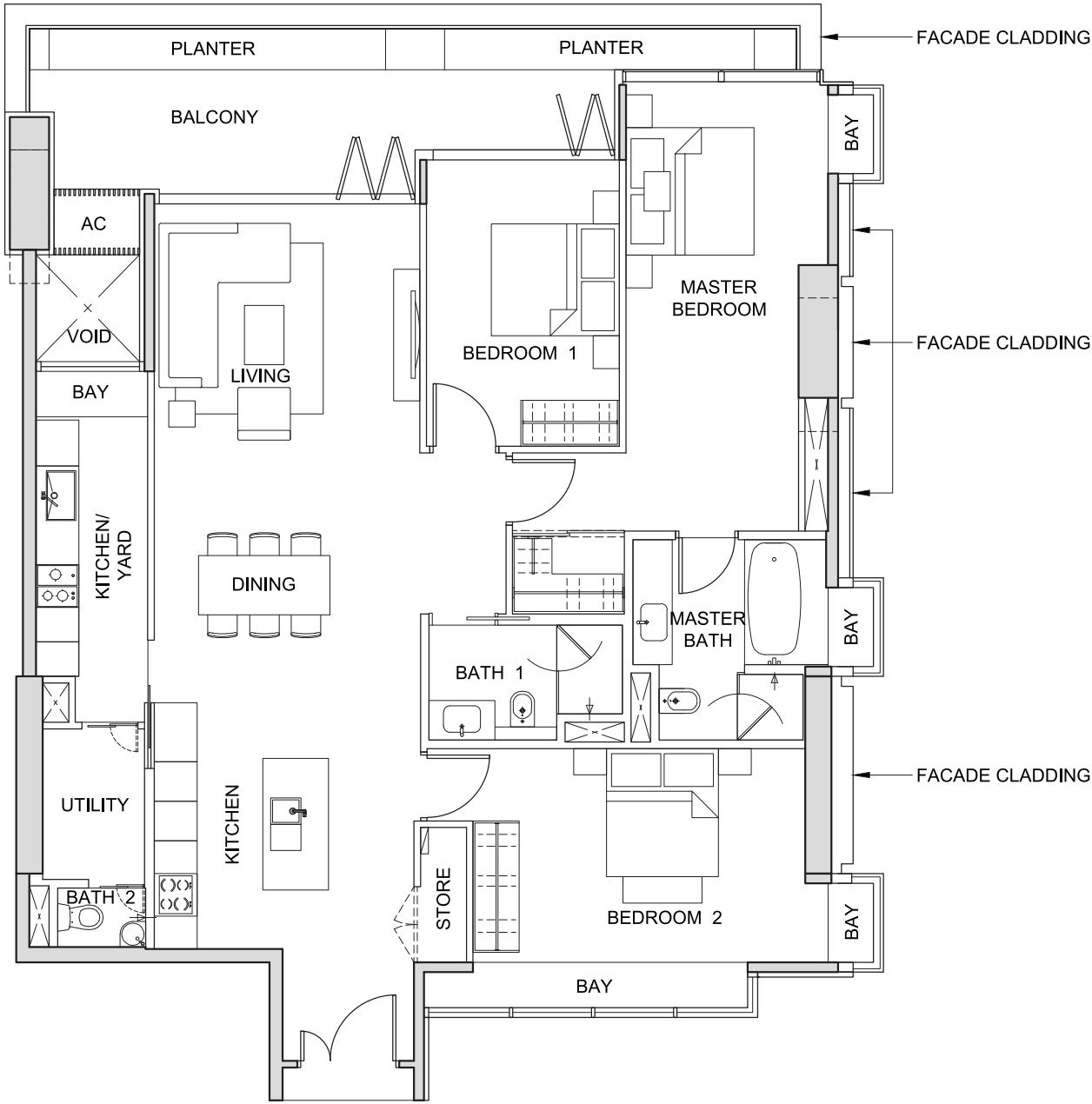


TYPE 3A1

3-BEDROOM

(180 sq m / 1,938 sq ft)

#23-10



NOT TO SCALE



FOR LEVEL 23

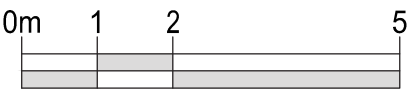
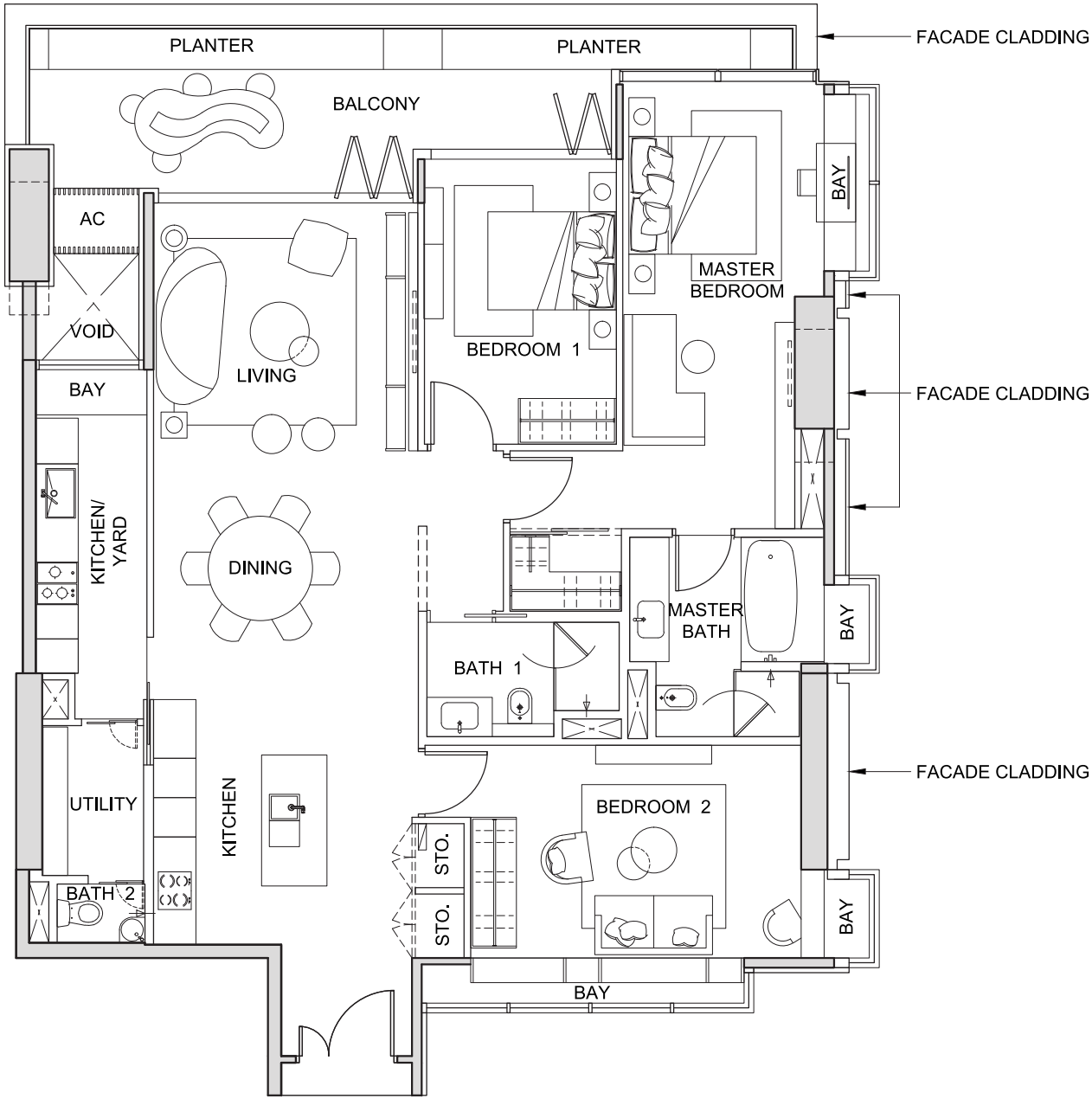
The above plans and illustrations are subject to change as may be required or approved by the relevant authorities. All measurements are estimates only and are subject to final survey.

TYPE 3A2

3-BEDROOM

(182 sq m / 1,959 sq ft)

#24-10



NOT TO SCALE



FOR LEVEL 24

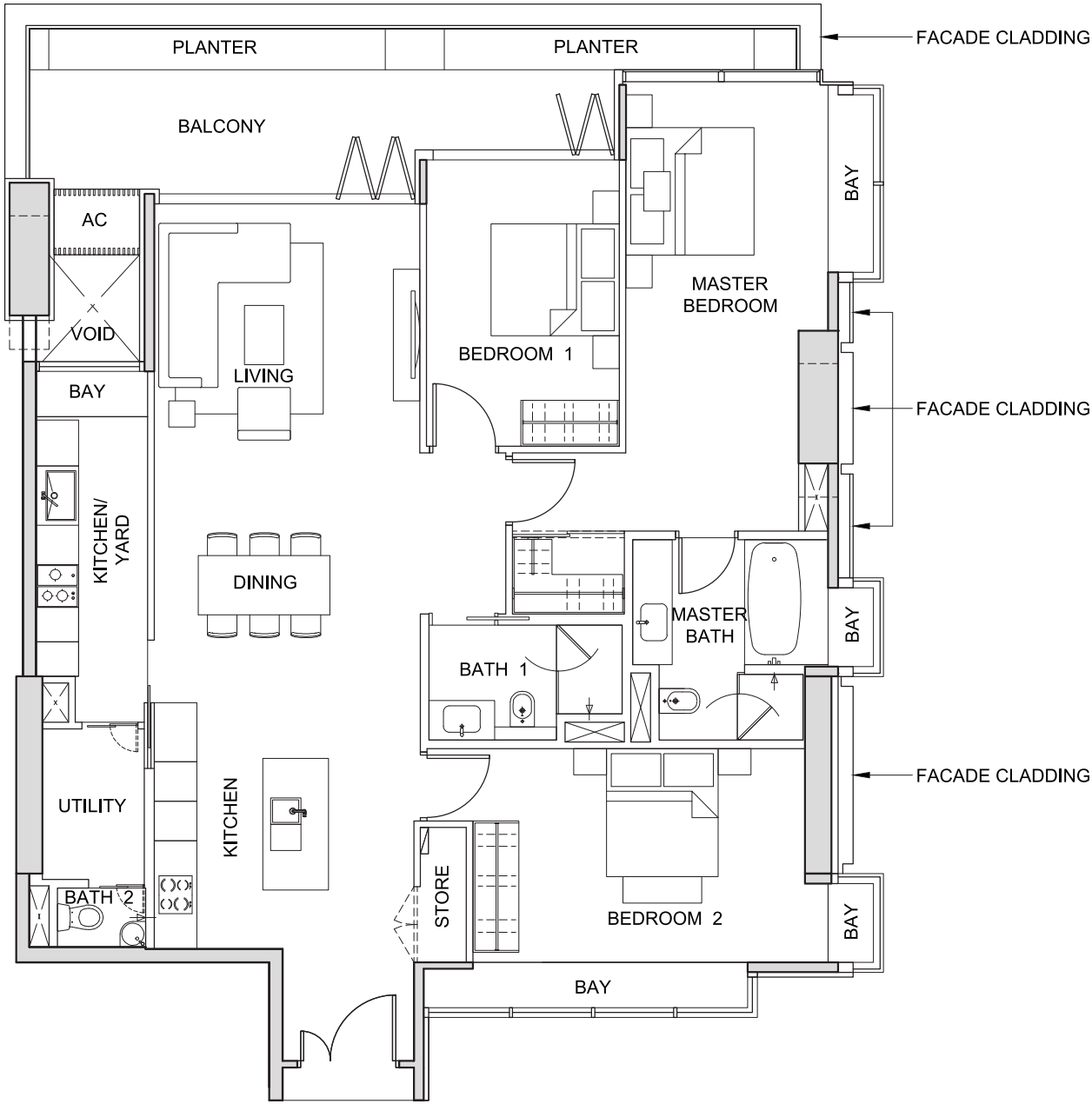
The above plans and illustrations are subject to change as may be required or approved by the relevant authorities. All measurements are estimates only and are subject to final survey.

TYPE 3A3

3-BEDROOM

(182 sq m / 1,959 sq ft)

#25-10



NOT TO SCALE



FOR LEVEL 25

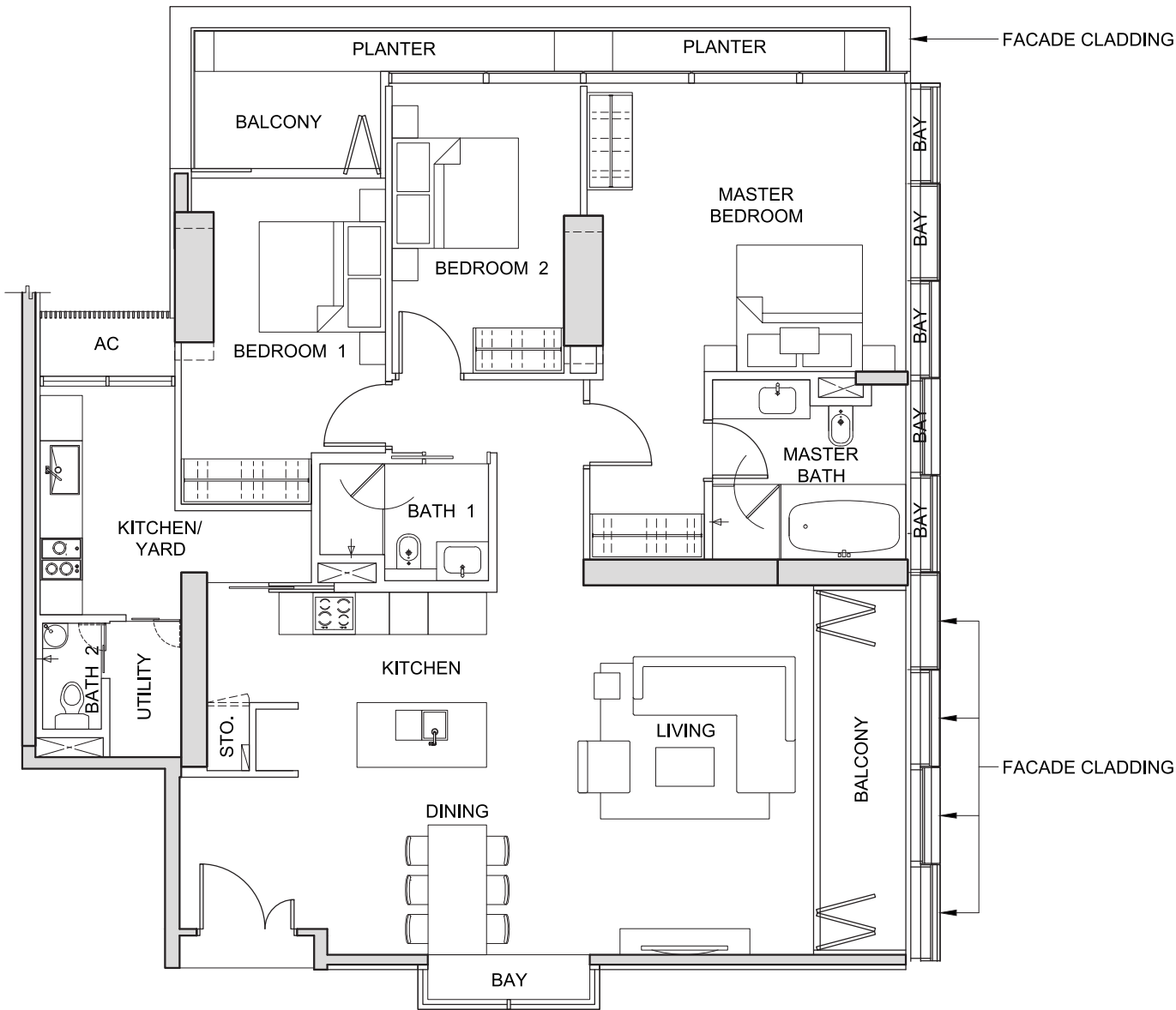
The above plans and illustrations are subject to change as may be required or approved by the relevant authorities. All measurements are estimates only and are subject to final survey.

TYPE 3B1

3-BEDROOM

(186 sq m / 2,002 sq ft)

#23-02



NOT TO SCALE



FOR LEVEL 23

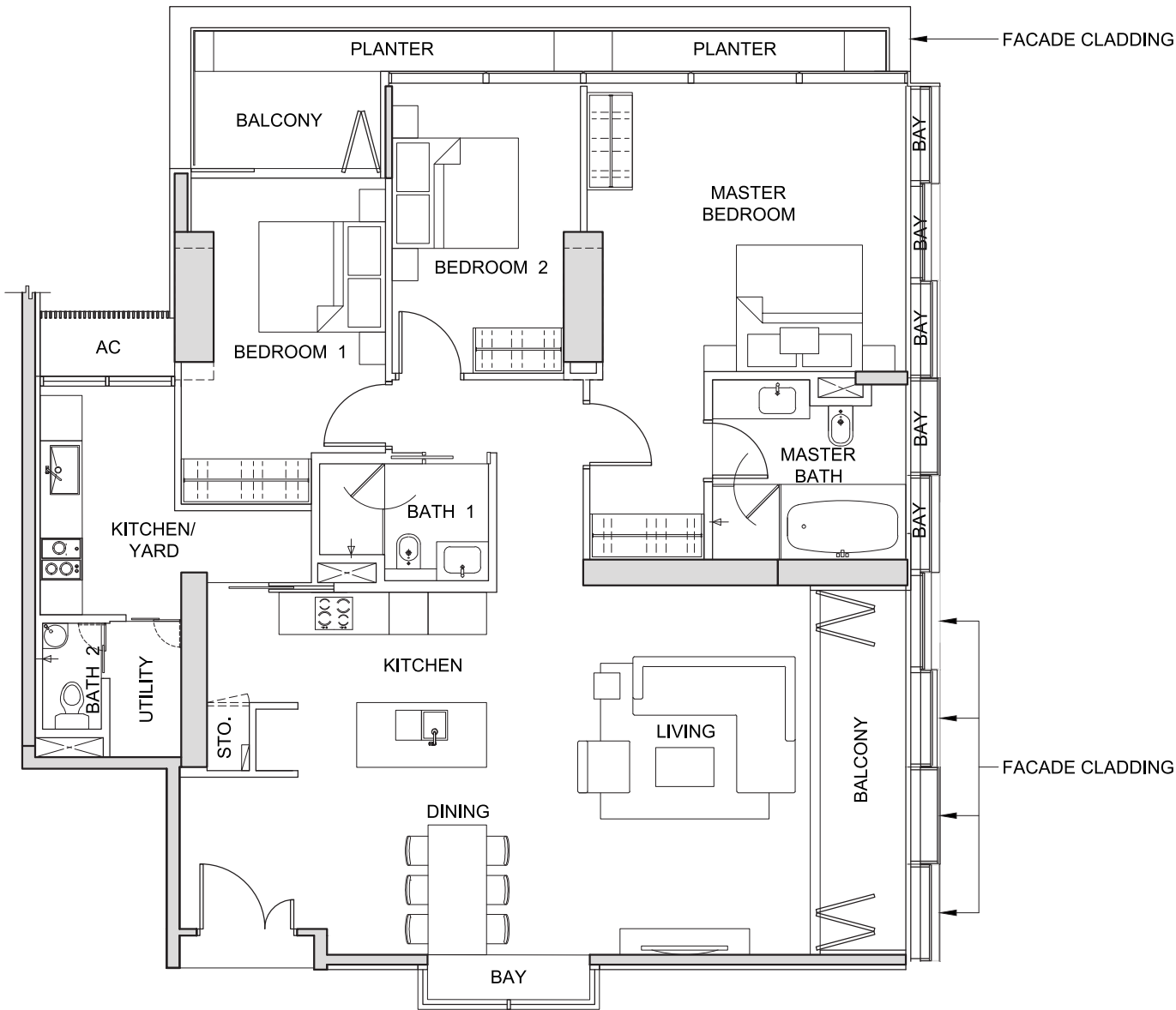
The above plans and illustrations are subject to change as may be required or approved by the relevant authorities. All measurements are estimates only and are subject to final survey.

TYPE 3B2

3-BEDROOM

(186 sq m / 2,002 sq ft)

#24-02



NOT TO SCALE



FOR LEVEL 24

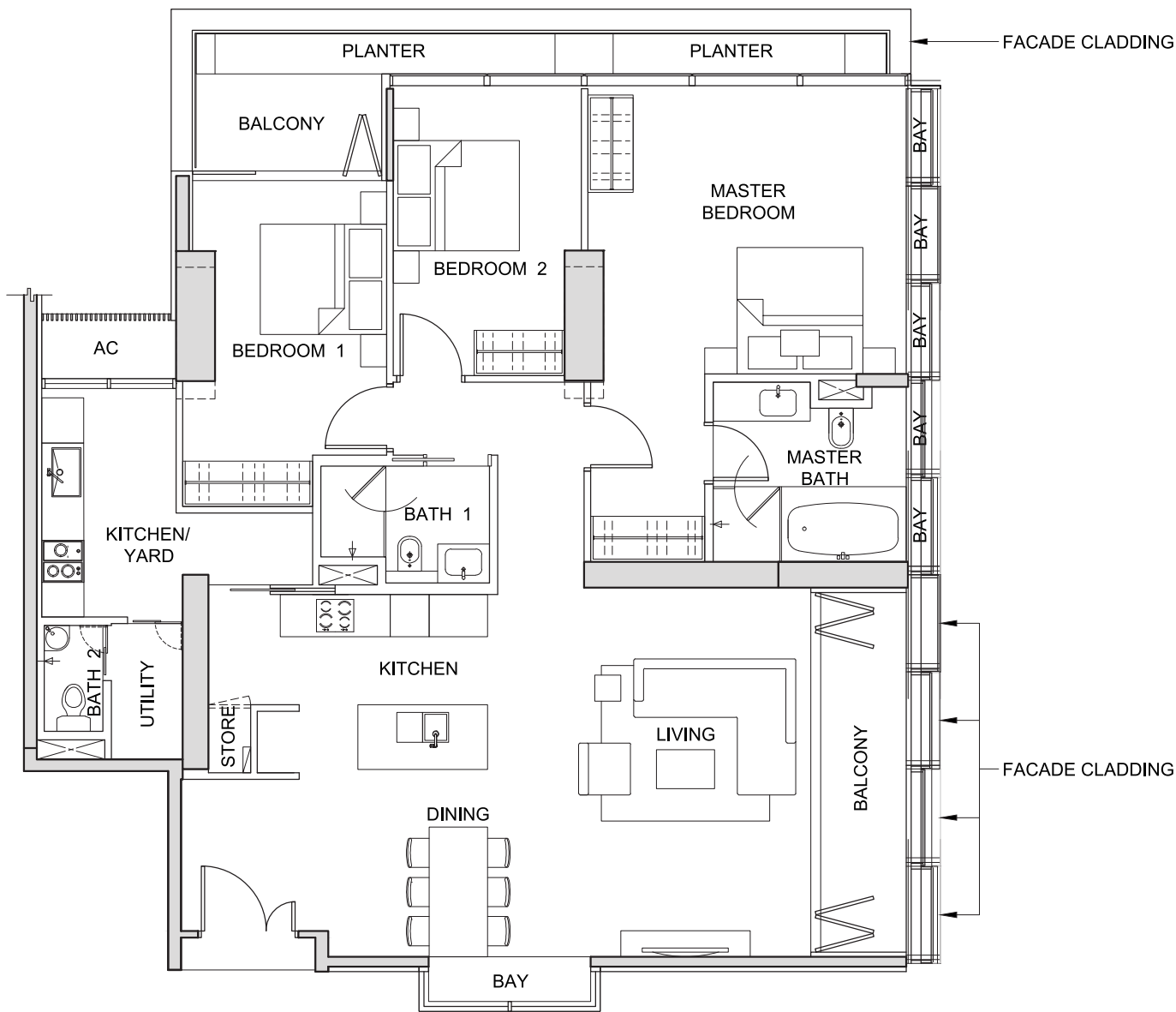
The above plans and illustrations are subject to change as may be required or approved by the relevant authorities. All measurements are estimates only and are subject to final survey.

TYPE 3B3

3-BEDROOM

(186 sq m / 2,002 sq ft)

#25-02



NOT TO SCALE



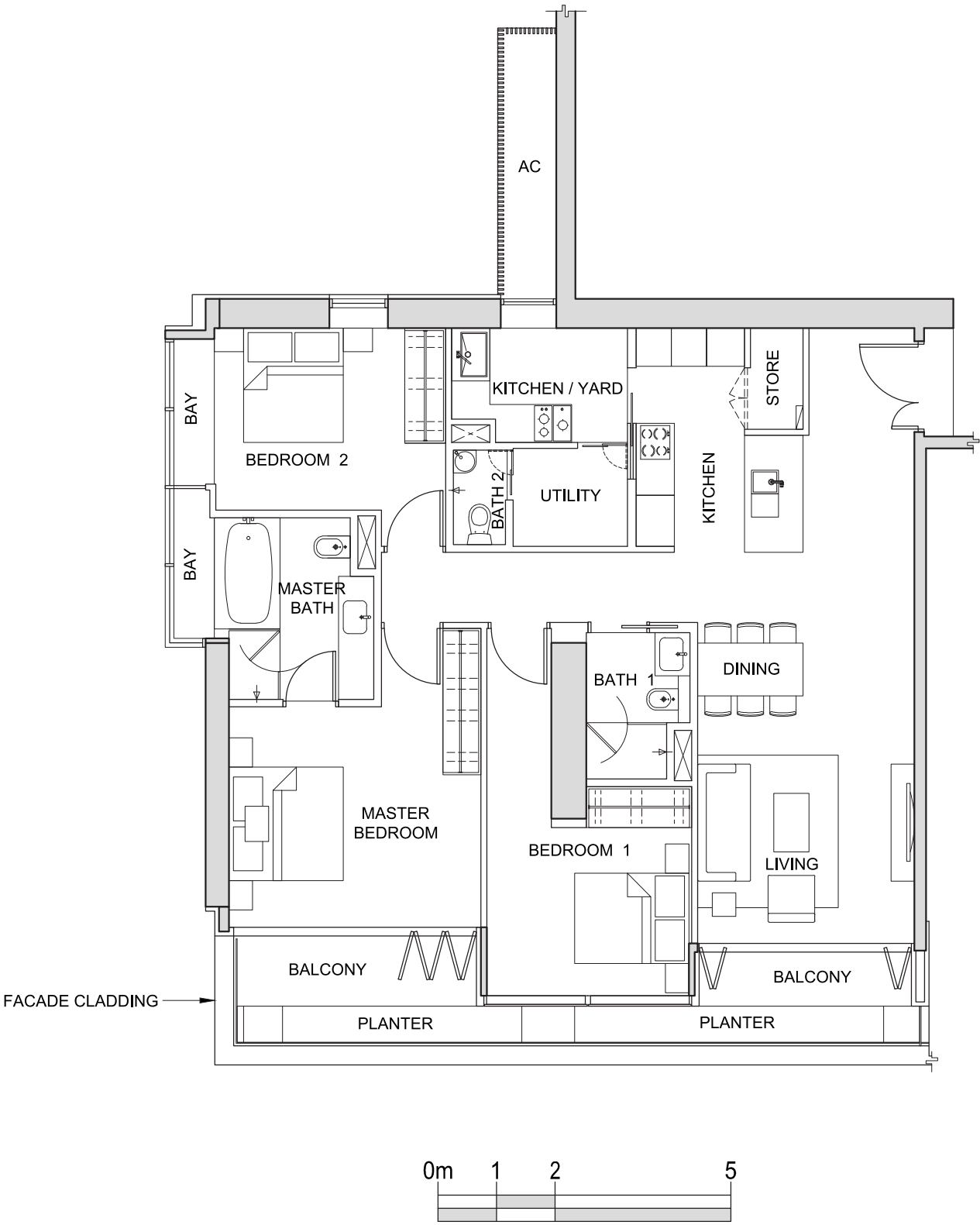
The above plans and illustrations are subject to change as may be required or approved by the relevant authorities. All measurements are estimates only and are subject to final survey.

TYPE 3C1

3-BEDROOM

(162 sq m / 1,744 sq ft)

- #24-06
- #25-06
- #26-06
- #27-06
- #28-06
- #29-06
- #30-06
- #31-06



FOR LEVELS 24-31

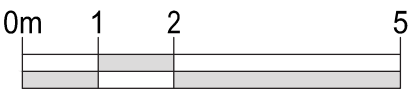
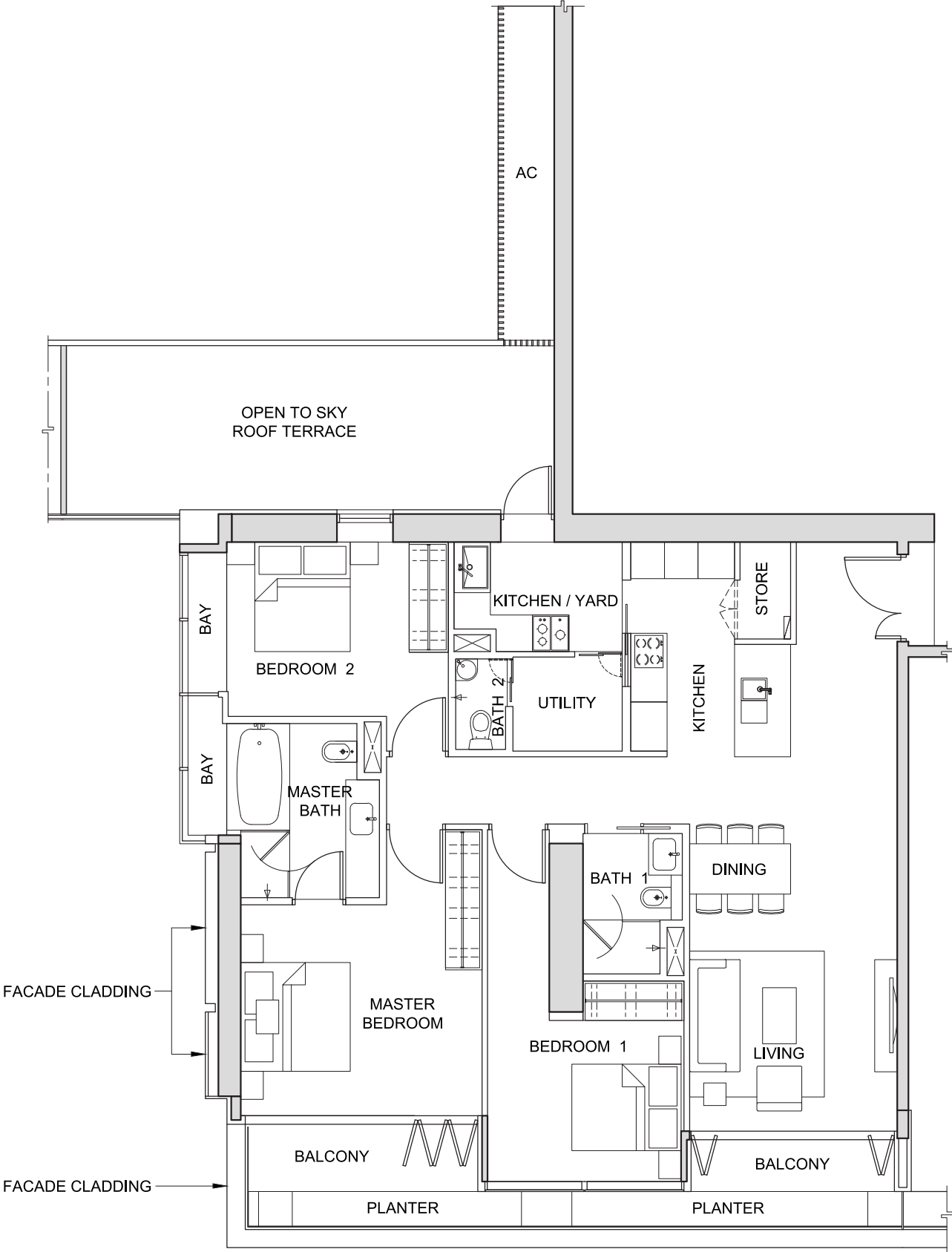
The above plans and illustrations are subject to change as may be required or approved by the relevant authorities. All measurements are estimates only and are subject to final survey.

TYPE 3C2

3-BEDROOM

(192 sq m / 2,067 sq ft)

#23-06



FOR LEVEL 23

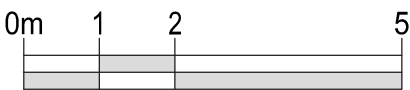
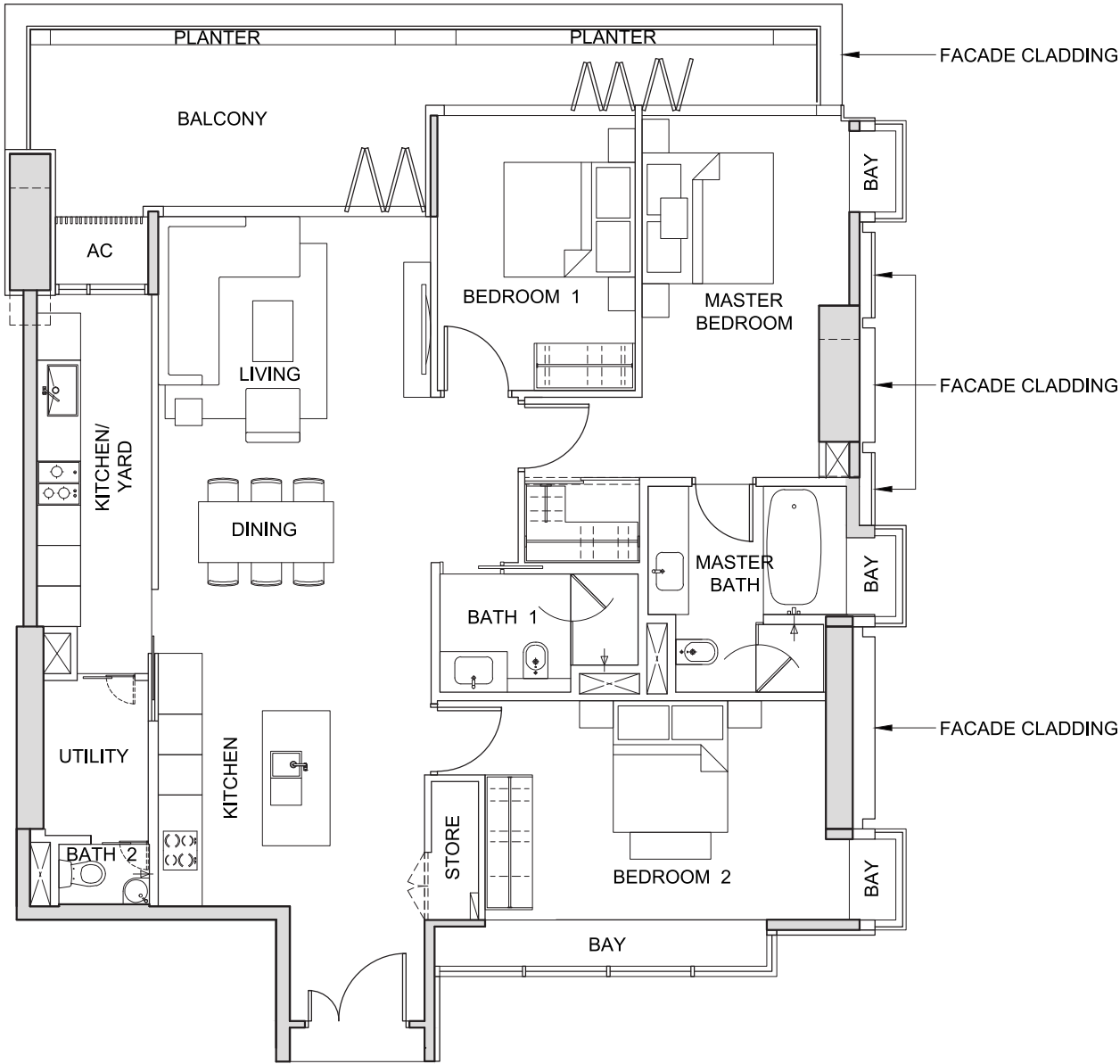
The above plans and illustrations are subject to change as may be required or approved by the relevant authorities. All measurements are estimates only and are subject to final survey.

TYPE 3D1

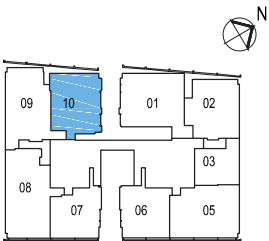
3-BEDROOM

(172 sq m / 1,851 sq ft)

#26-10



NOT TO SCALE



FOR LEVEL 26

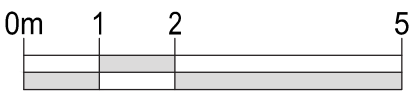
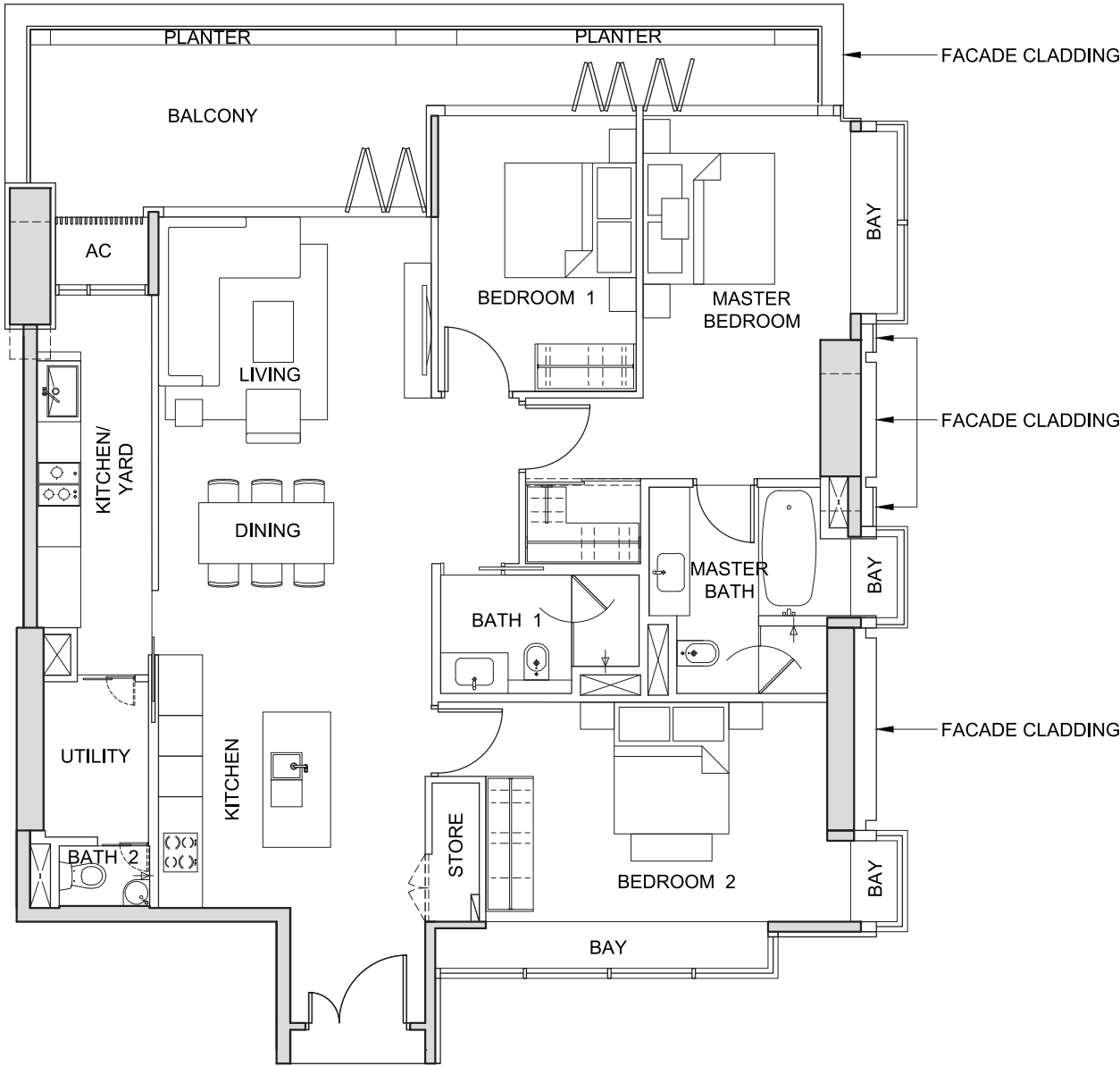
The above plans and illustrations are subject to change as may be required or approved by the relevant authorities. All measurements are estimates only and are subject to final survey.

TYPE 3D2

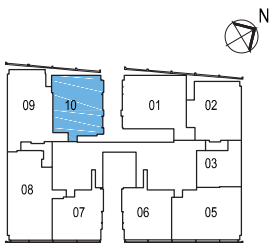
3-BEDROOM

(173 sq m / 1,862 sq ft)

#27-10



NOT TO SCALE



FOR LEVEL 27

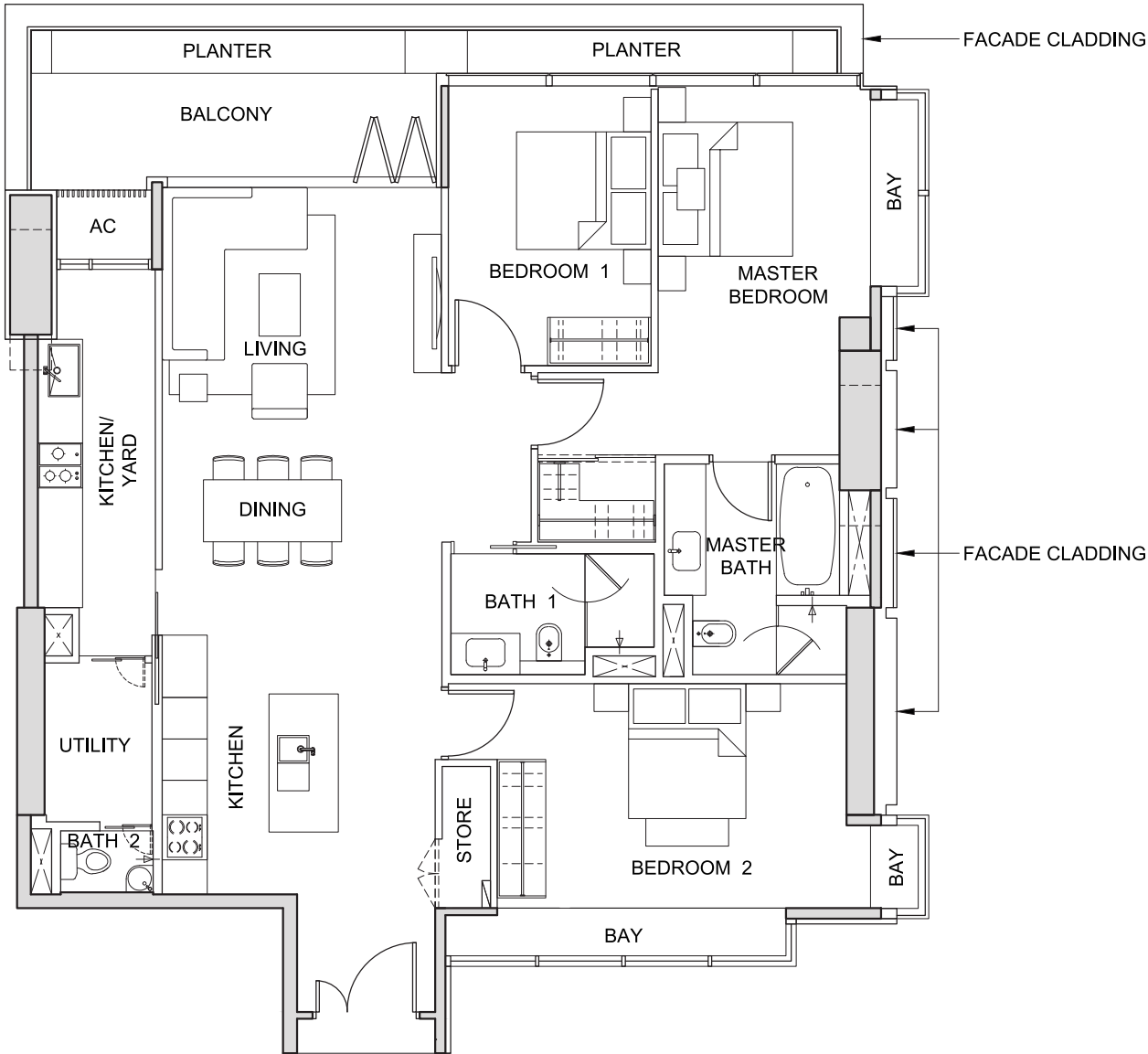
The above plans and illustrations are subject to change as may be required or approved by the relevant authorities. All measurements are estimates only and are subject to final survey.

TYPE 3D3

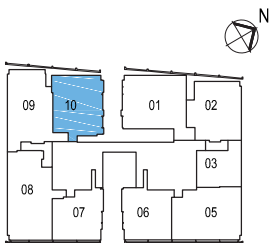
3-BEDROOM

(166 sq m / 1,787 sq ft)

#28-10



NOT TO SCALE



FOR LEVEL 28

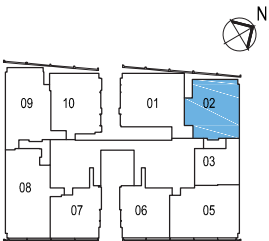
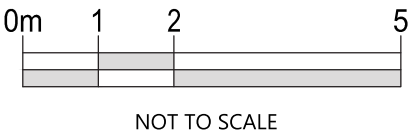
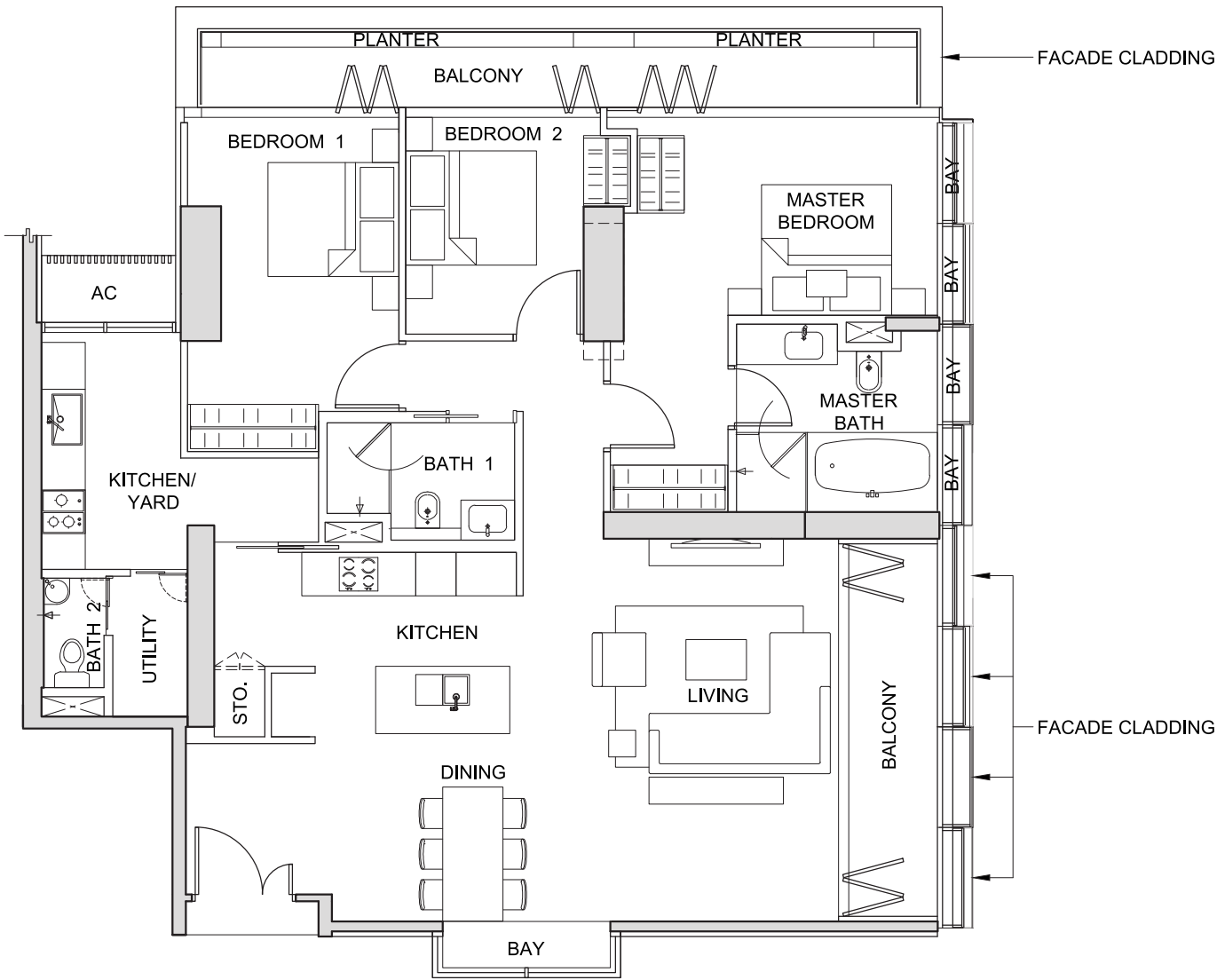
The above plans and illustrations are subject to change as may be required or approved by the relevant authorities. All measurements are estimates only and are subject to final survey.

TYPE 3E1

3-BEDROOM

(174 sq m / 1,873 sq ft)

#26-02



FOR LEVEL 26

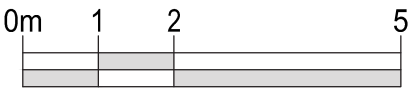
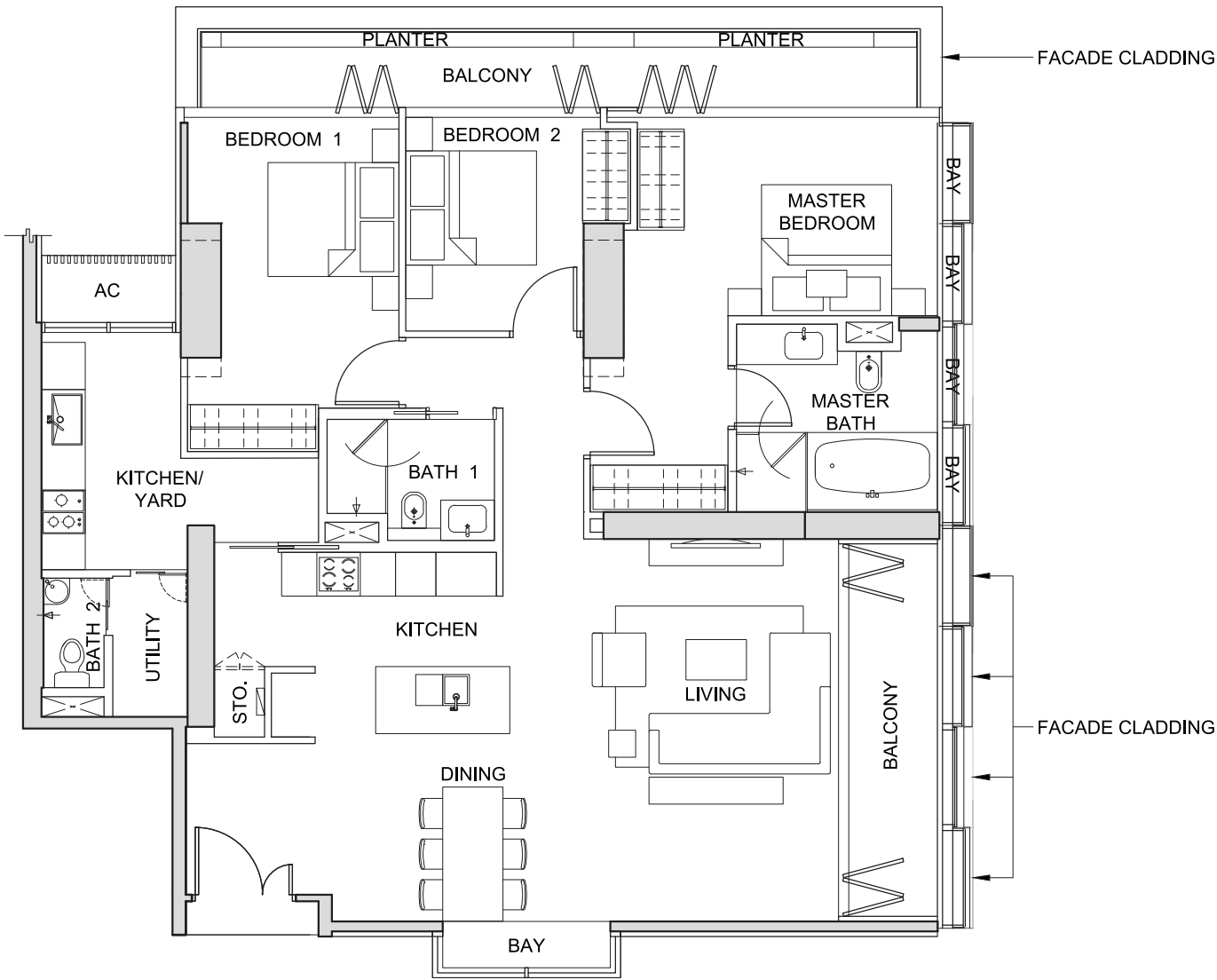
The above plans and illustrations are subject to change as may be required or approved by the relevant authorities. All measurements are estimates only and are subject to final survey.

TYPE 3E2

3-BEDROOM

(174 sq m / 1,873 sq ft)

#27-02



NOT TO SCALE



FOR LEVEL 27

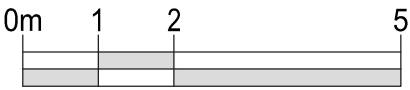
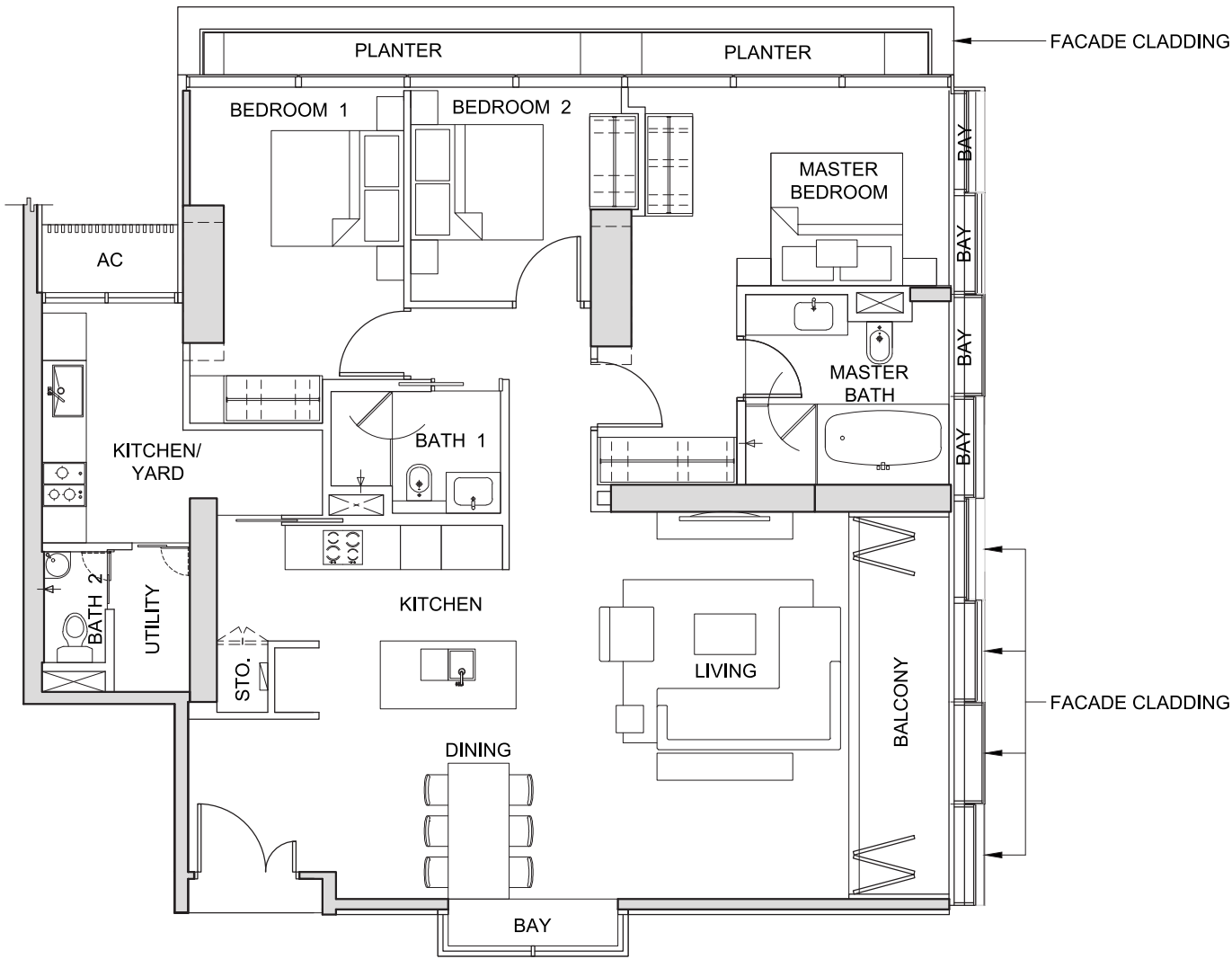
The above plans and illustrations are subject to change as may be required or approved by the relevant authorities. All measurements are estimates only and are subject to final survey.

TYPE 3E3

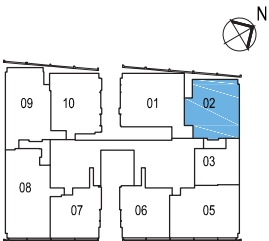
3-BEDROOM

(168 sq m / 1,808 sq ft)

#28-02



NOT TO SCALE



FOR LEVEL 28

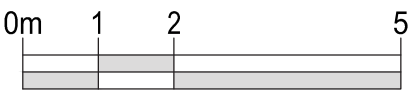
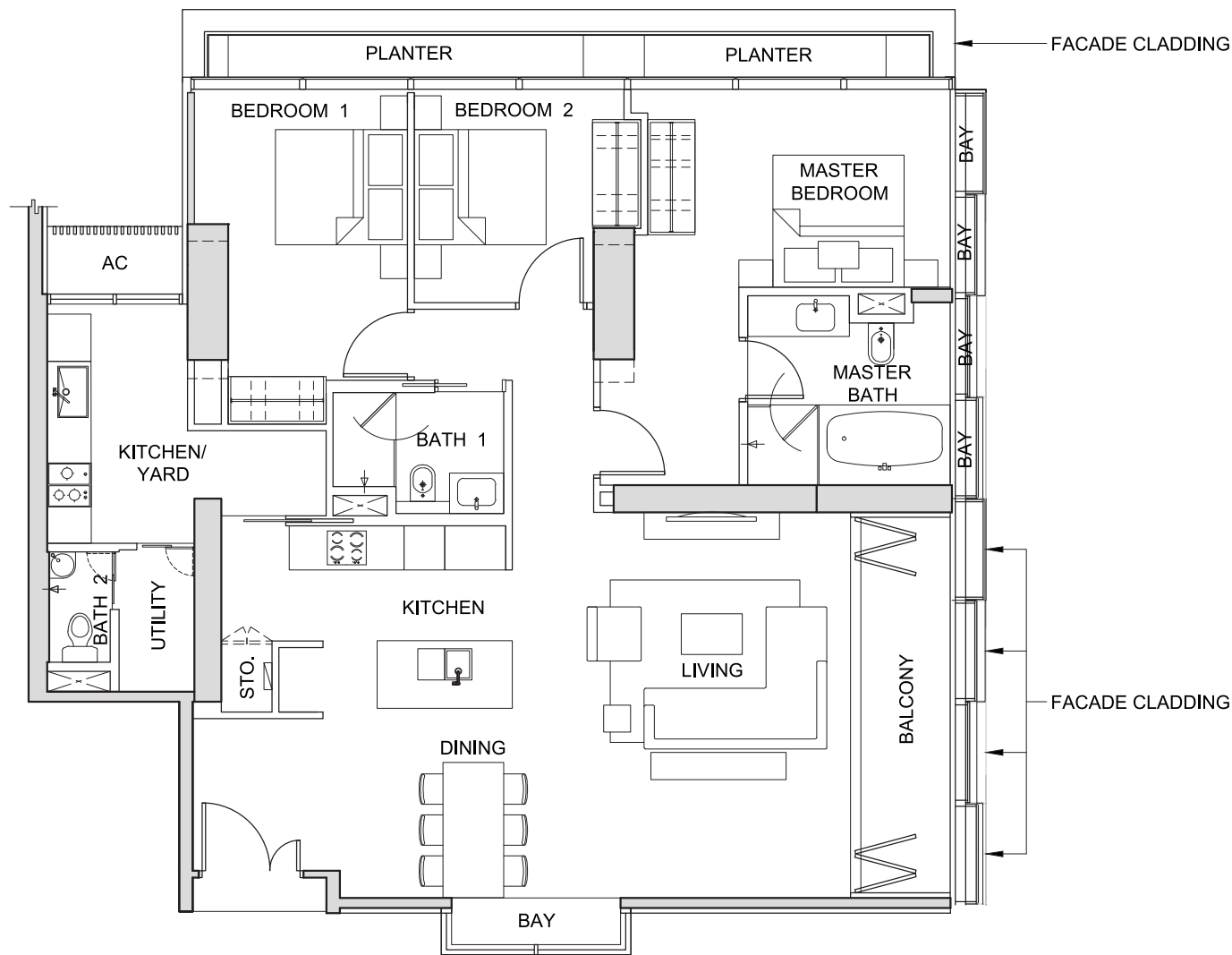
The above plans and illustrations are subject to change as may be required or approved by the relevant authorities. All measurements are estimates only and are subject to final survey.

TYPE 3E4

3-BEDROOM

(168 sq m / 1,808 sq ft)

#29-02



NOT TO SCALE



FOR LEVEL 29

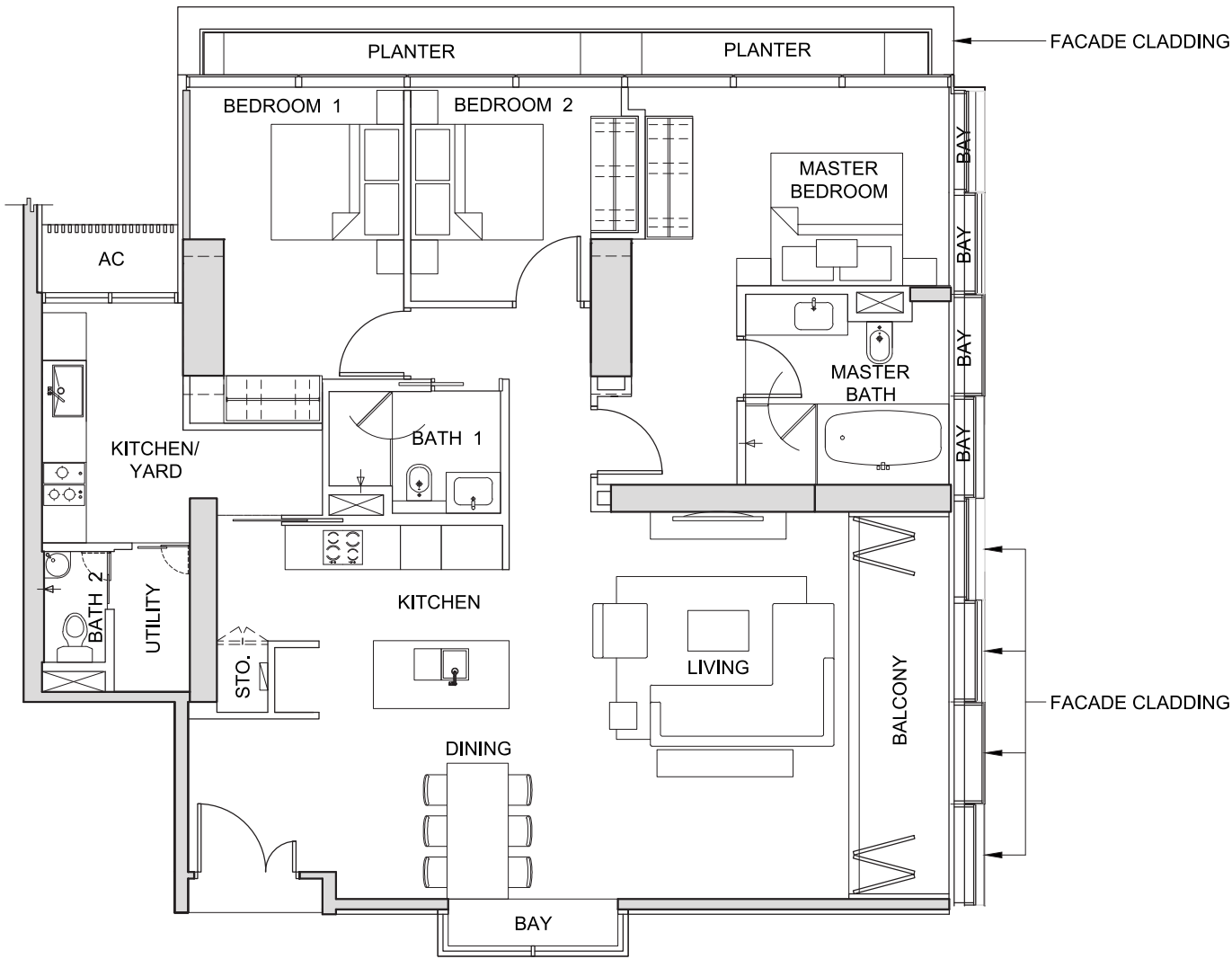
The above plans and illustrations are subject to change as may be required or approved by the relevant authorities. All measurements are estimates only and are subject to final survey.

TYPE 3E5

3-BEDROOM

(168 sq m / 1,808 sq ft)

#30-02



FOR LEVEL 30

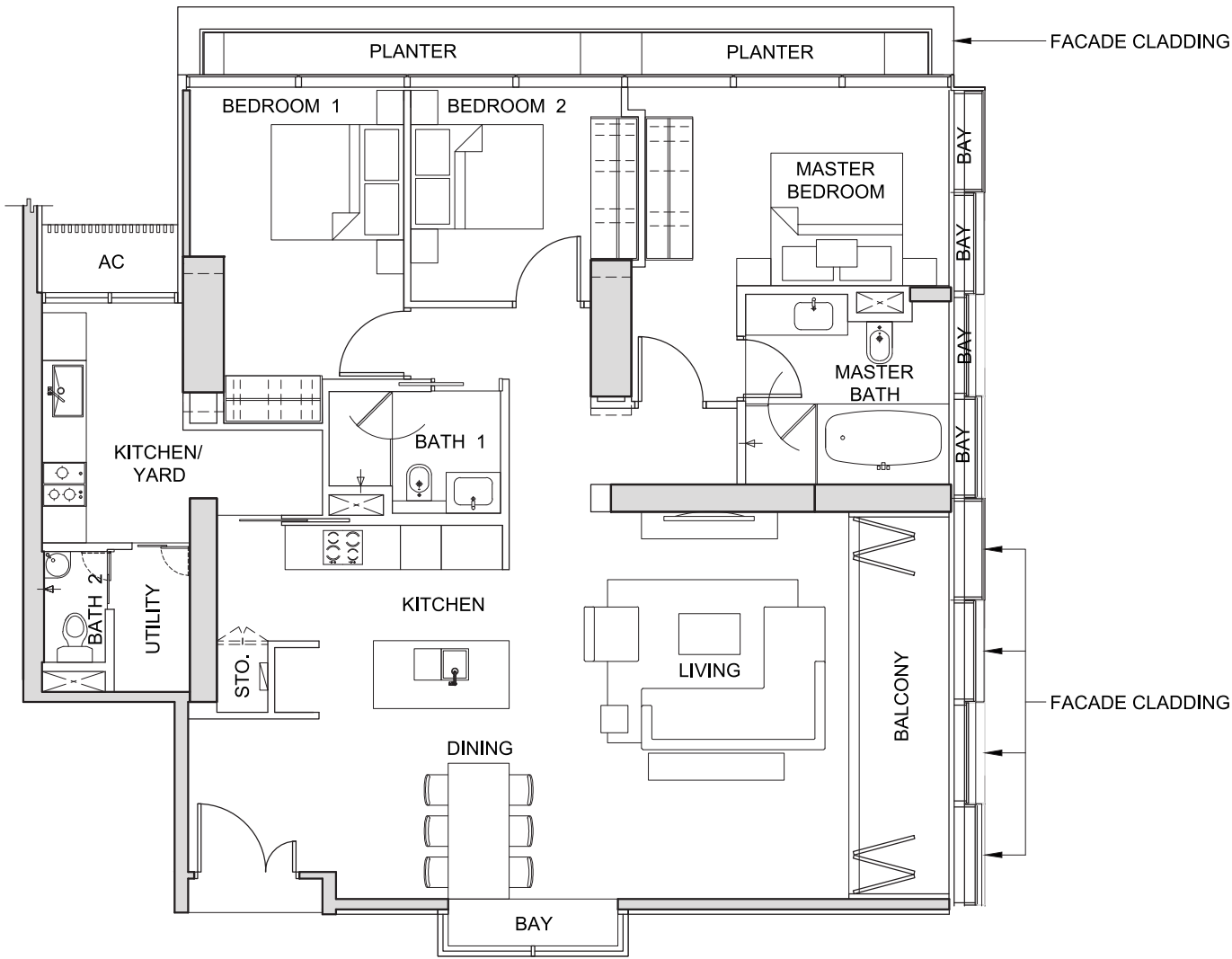
The above plans and illustrations are subject to change as may be required or approved by the relevant authorities. All measurements are estimates only and are subject to final survey.

TYPE 3E6

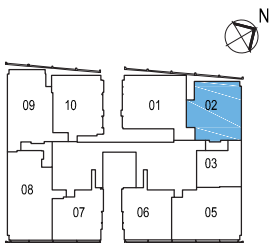
3-BEDROOM

(168 sq m / 1,808 sq ft)

#31-02



NOT TO SCALE



FOR LEVEL 31

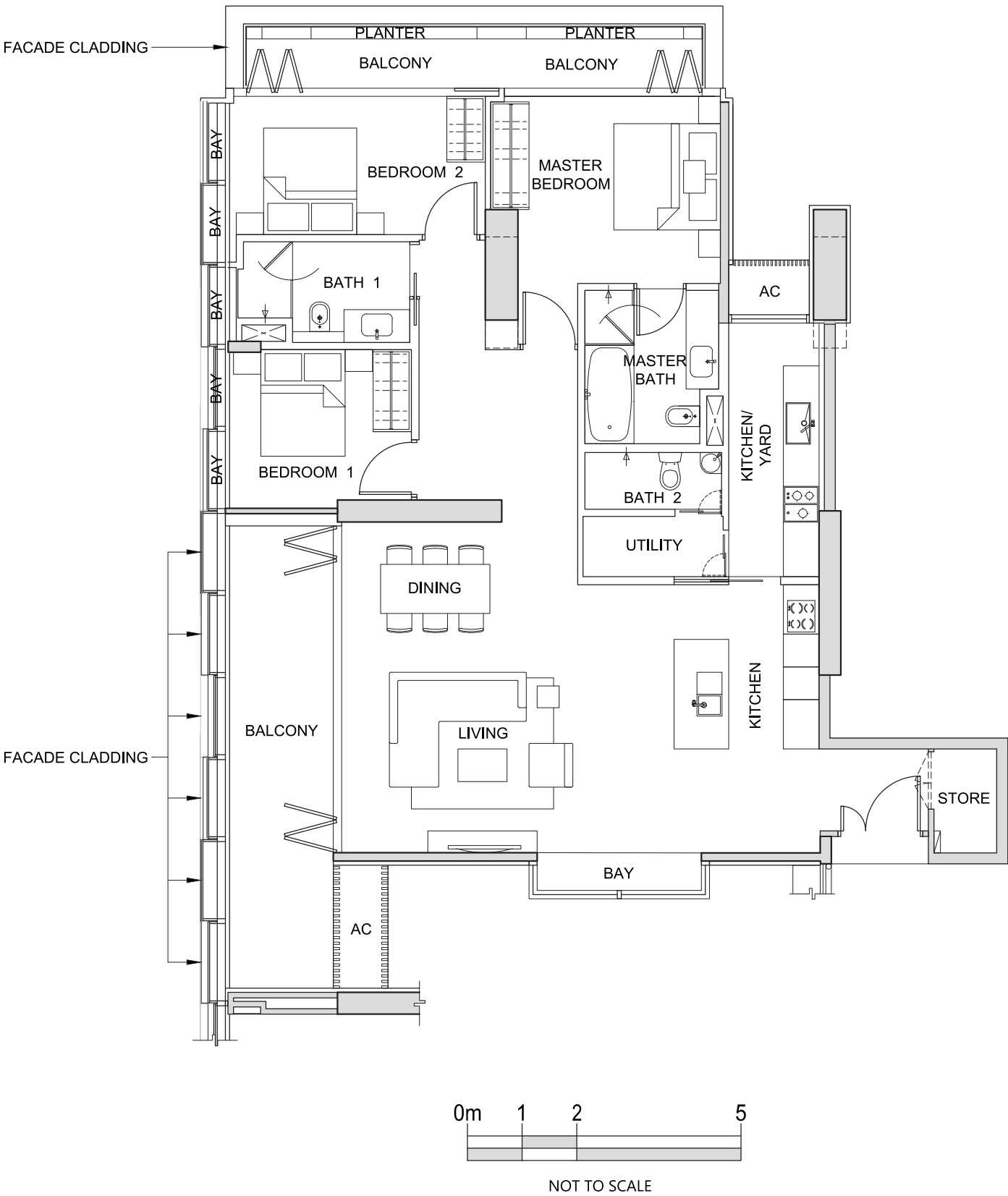
The above plans and illustrations are subject to change as may be required or approved by the relevant authorities. All measurements are estimates only and are subject to final survey.

TYPE 3F1

3-BEDROOM

(183 sq m / 1,970 sq ft)

#29-09



FOR LEVEL 29

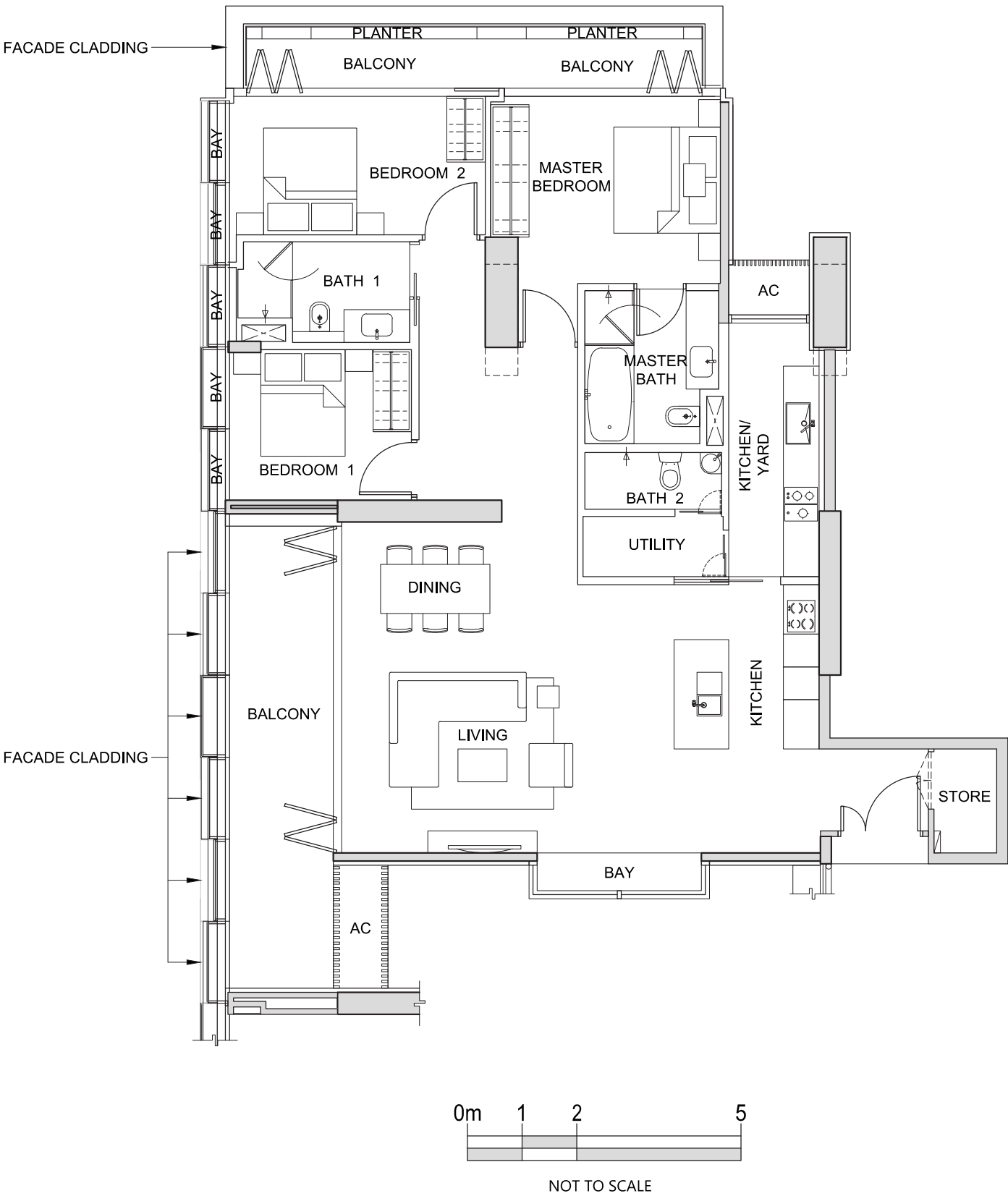
The above plans and illustrations are subject to change as may be required or approved by the relevant authorities. All measurements are estimates only and are subject to final survey.

TYPE 3F2

3-BEDROOM

(183 sq m / 1,970 sq ft)

#30-09



FOR LEVEL 30

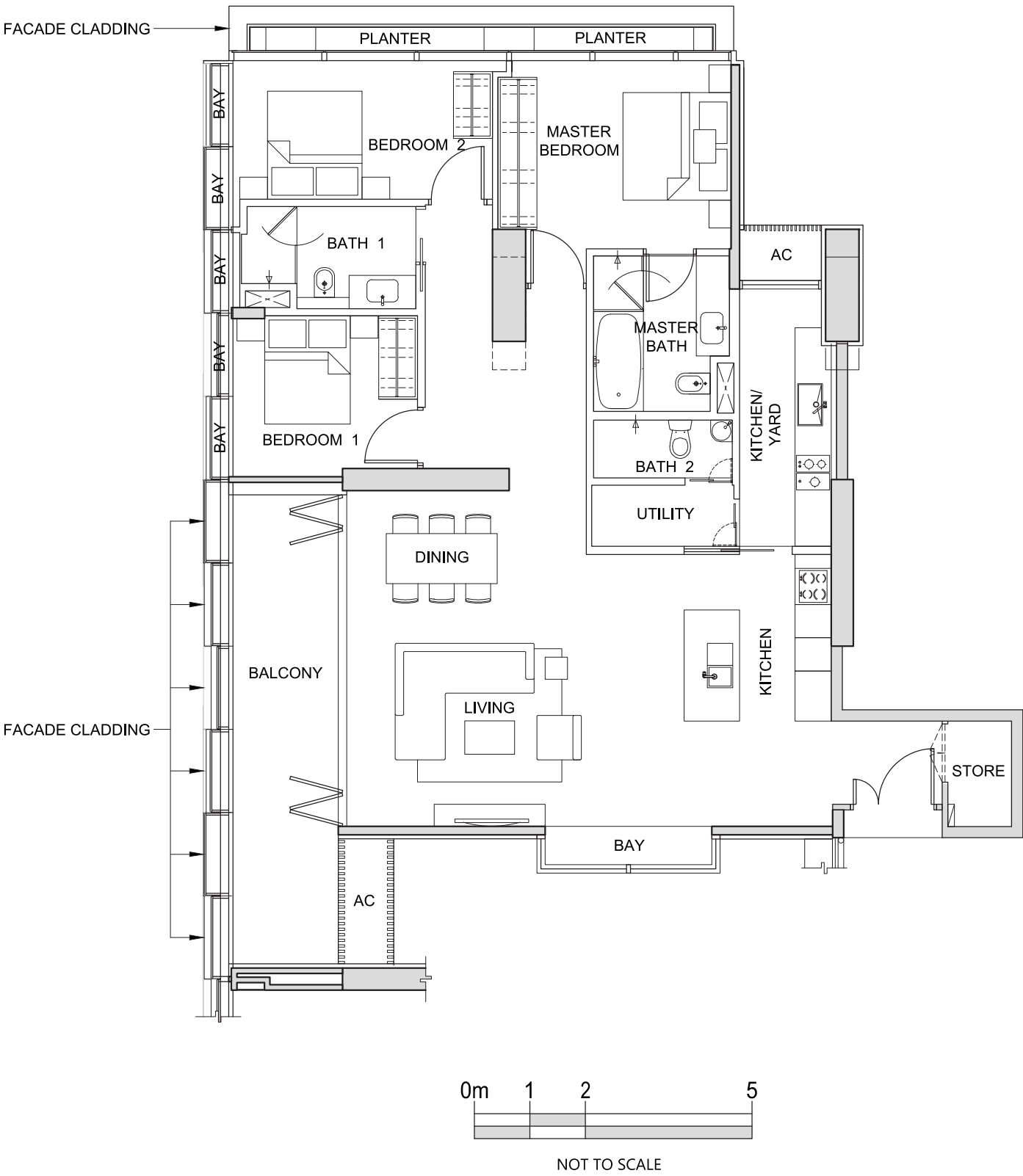
The above plans and illustrations are subject to change as may be required or approved by the relevant authorities. All measurements are estimates only and are subject to final survey.

TYPE 3F3

3-BEDROOM

(177 sq m / 1,905 sq ft)

#31-09



FOR LEVEL 31

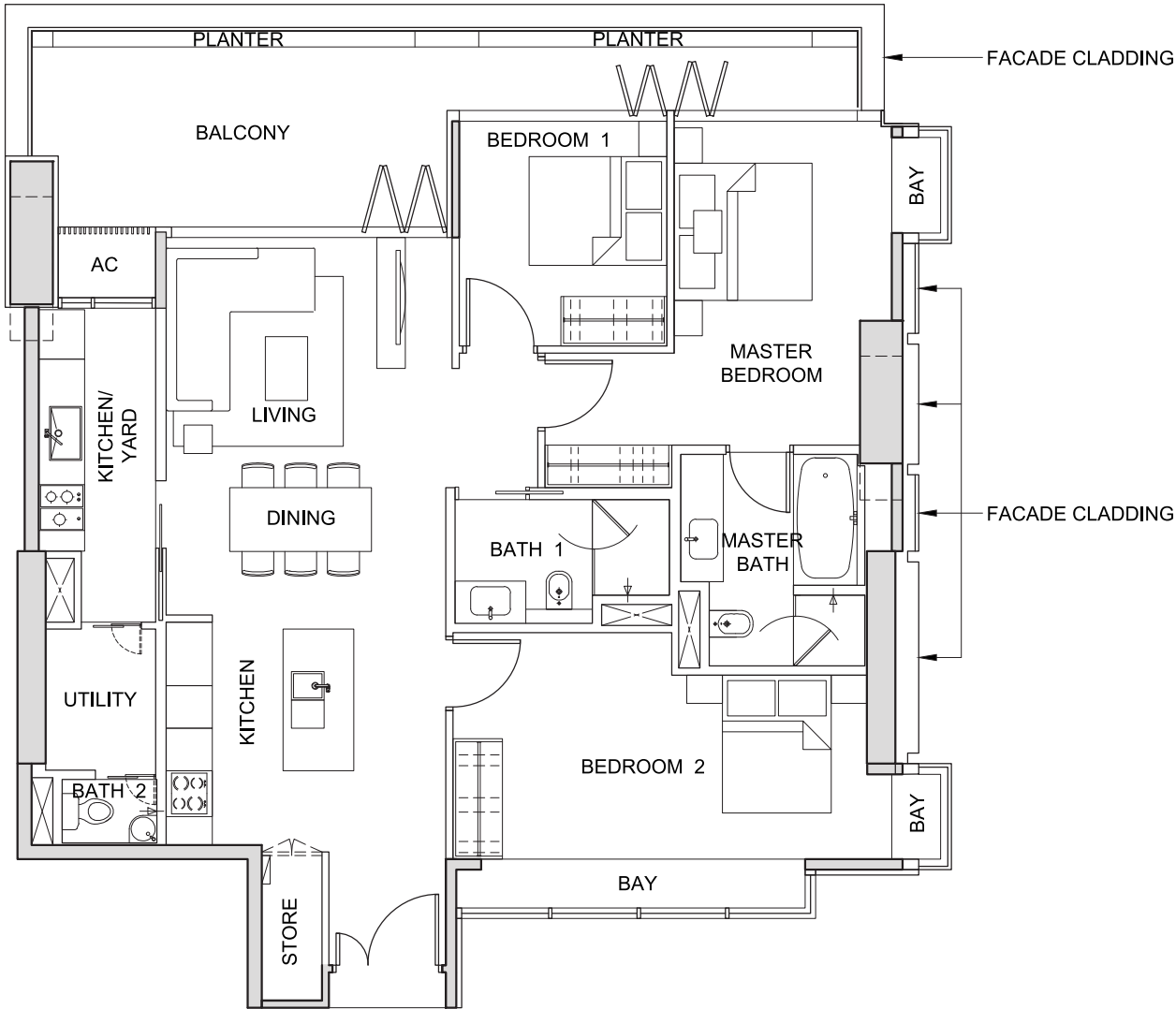
The above plans and illustrations are subject to change as may be required or approved by the relevant authorities. All measurements are estimates only and are subject to final survey.

TYPE 3G1

3-BEDROOM

(153 sq m / 1,647 sq ft)

#29-10



NOT TO SCALE



FOR LEVEL 29

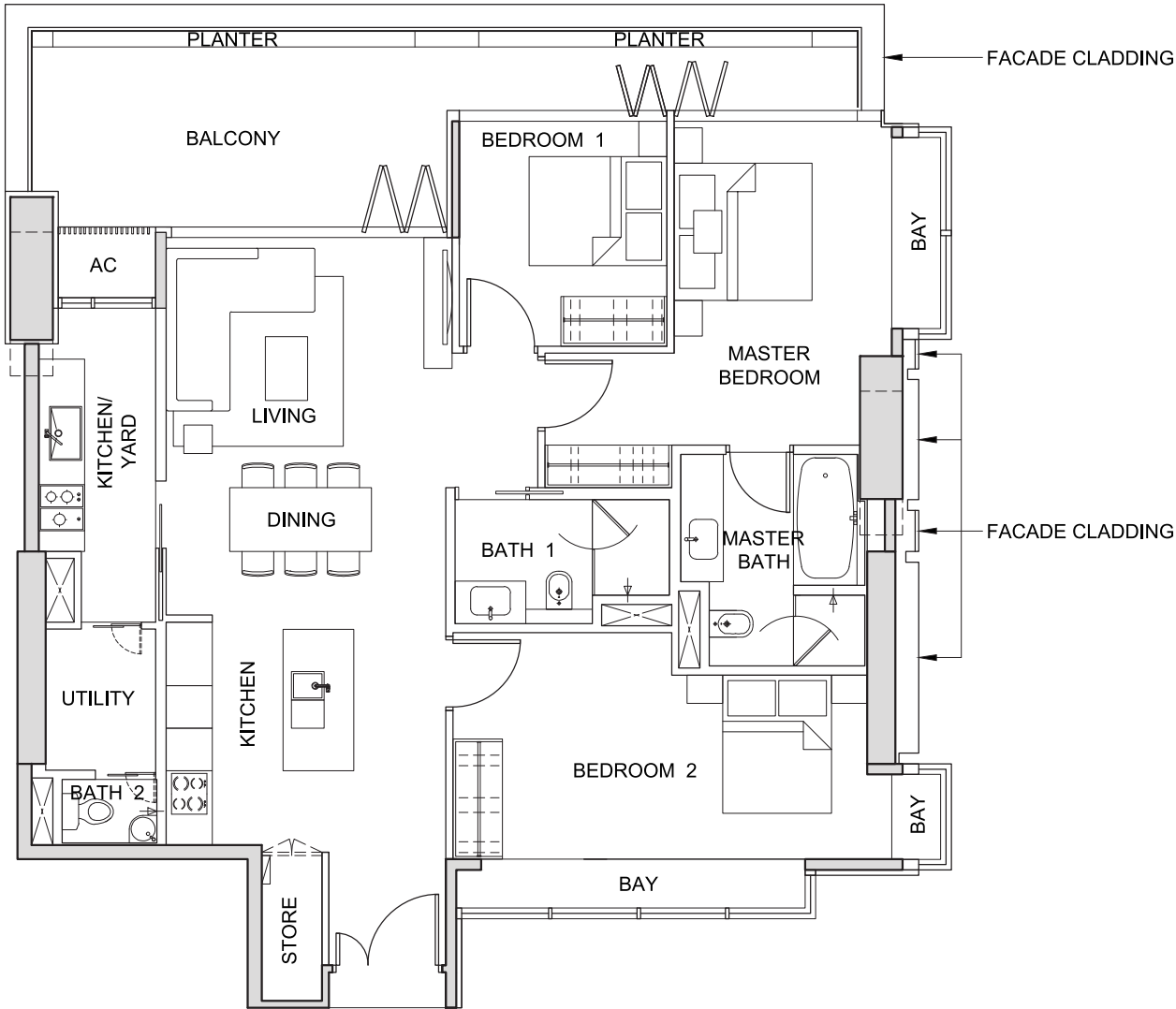
The above plans and illustrations are subject to change as may be required or approved by the relevant authorities. All measurements are estimates only and are subject to final survey.

TYPE 3G2

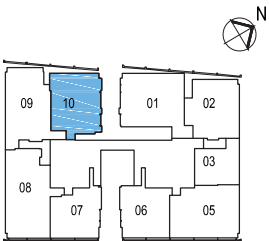
3-BEDROOM

(155 sq m / 1,668 sq ft)

#30-10



NOT TO SCALE



FOR LEVEL 30

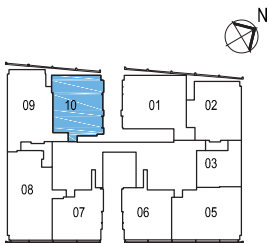
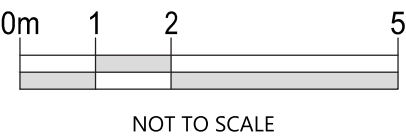
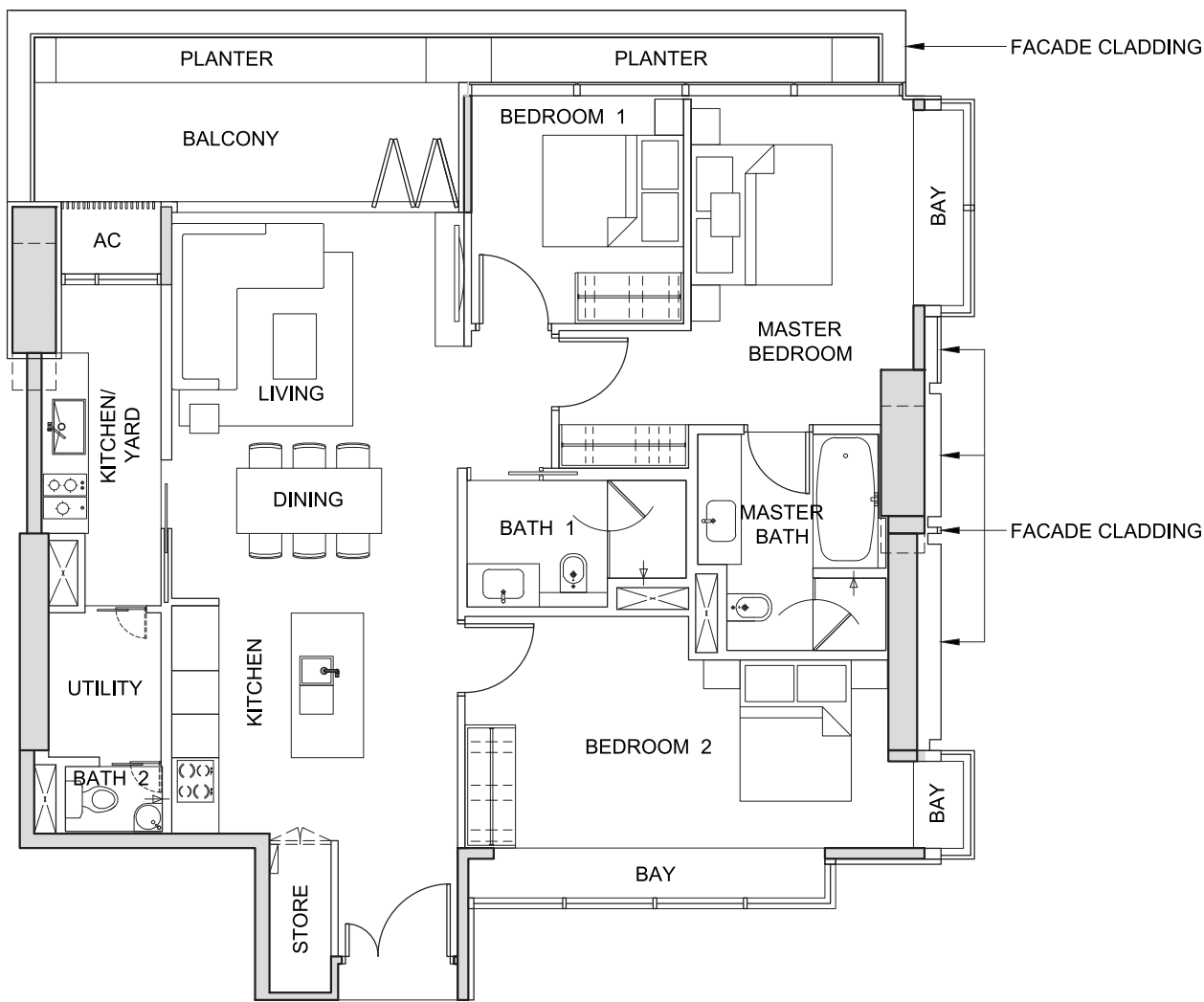
The above plans and illustrations are subject to change as may be required or approved by the relevant authorities. All measurements are estimates only and are subject to final survey.

TYPE 3G3

3-BEDROOM

(149 sq m / 1,604 sq ft)

#31-10



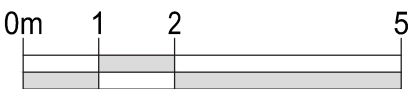
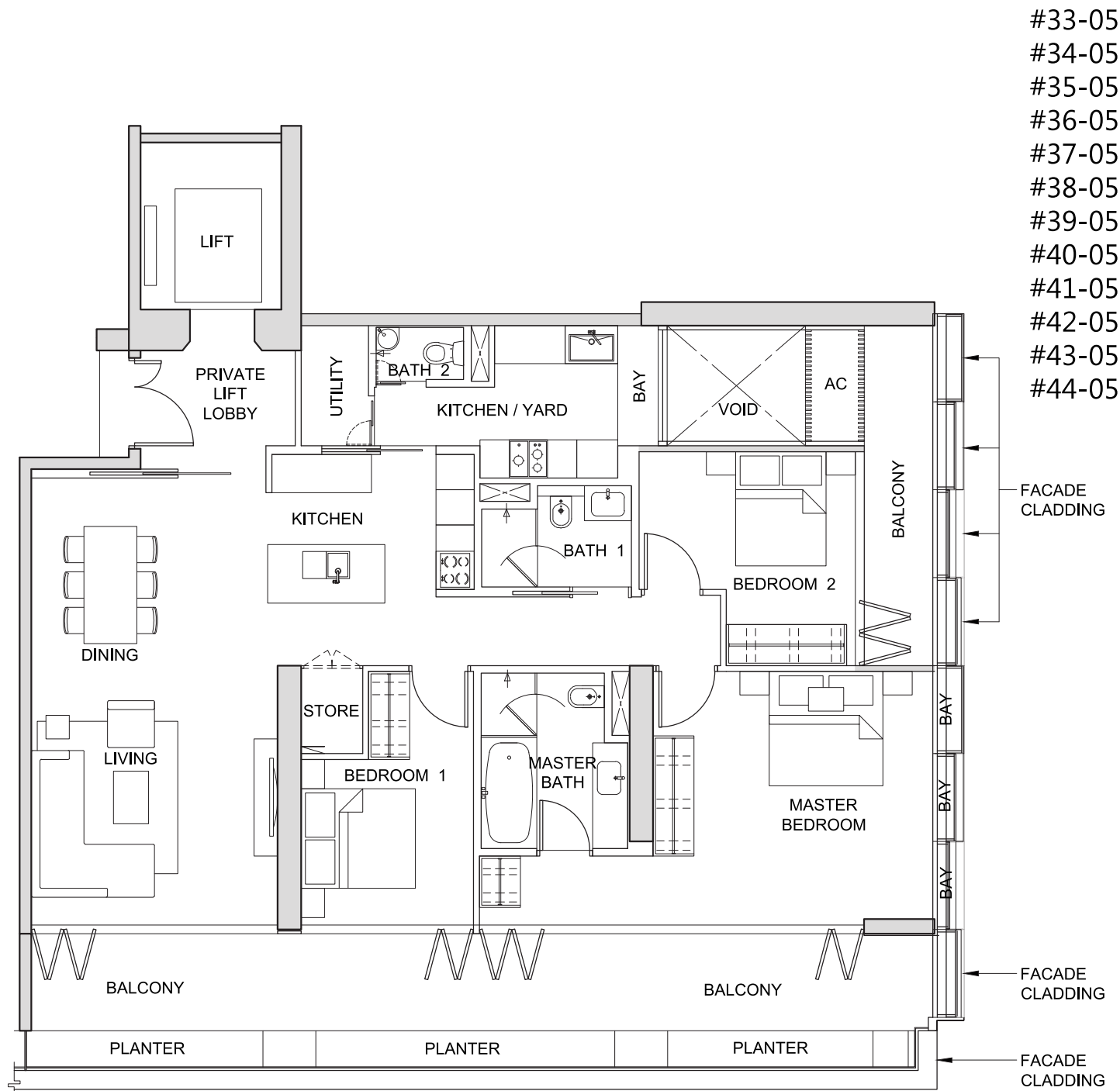
FOR LEVEL 31

The above plans and illustrations are subject to change as may be required or approved by the relevant authorities. All measurements are estimates only and are subject to final survey.

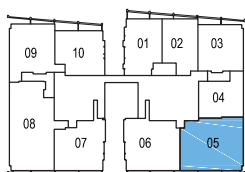
TYPE 3H1

3-BEDROOM

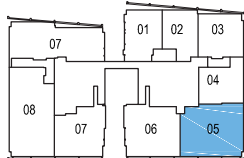
(195 sq m / 2,099 sq ft)



NOT TO SCALE



FOR LEVELS 33-40



FOR LEVELS 41-43



FOR LEVEL 44

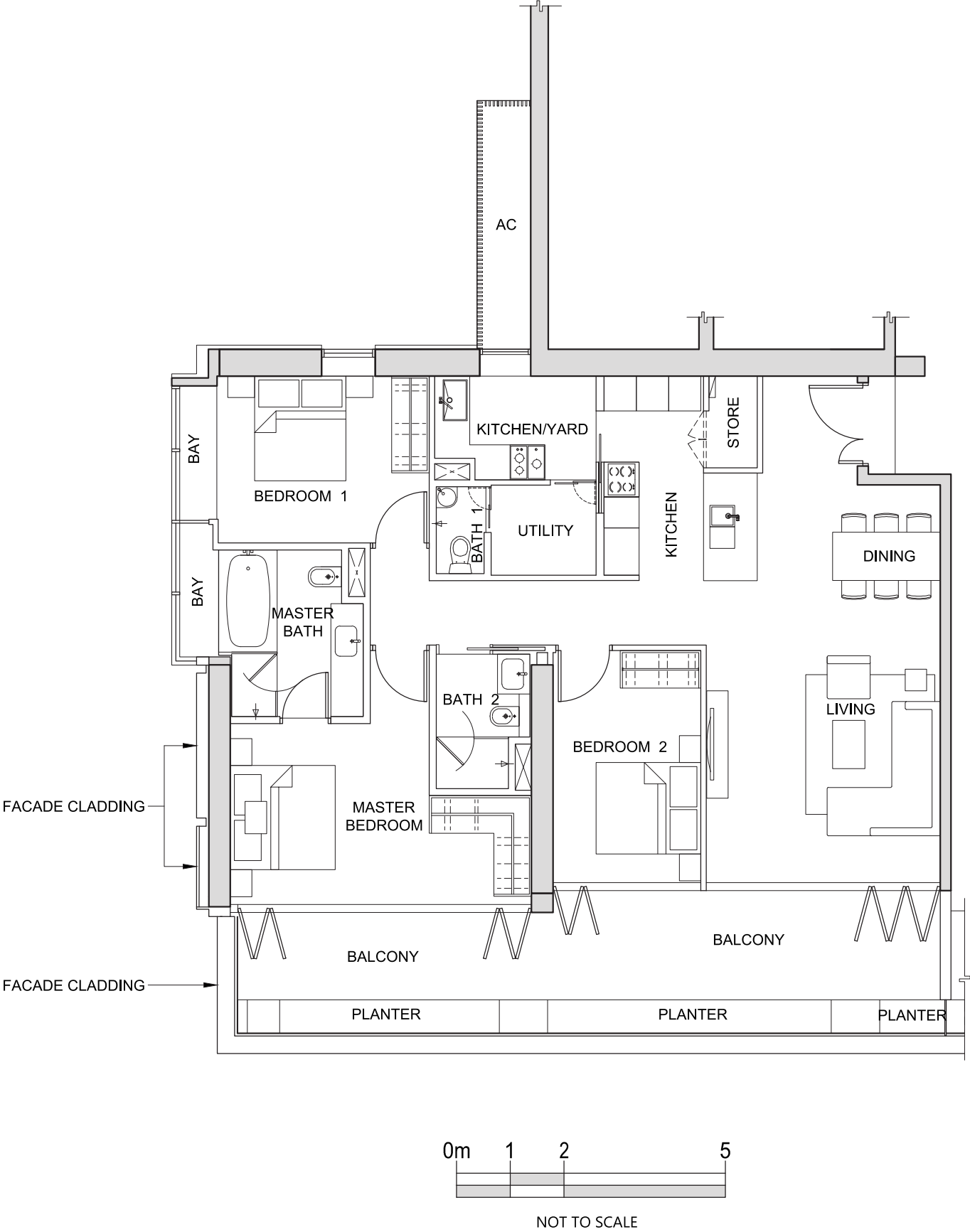
The above plans and illustrations are subject to change as may be required or approved by the relevant authorities. All measurements are estimates only and are subject to final survey.

TYPE 3J1

3-BEDROOM

(178 sq m / 1,916 sq ft)

#33-06
#34-06
#35-06
#36-06
#37-06
#38-06
#39-06
#40-06
#41-06
#42-06
#43-06



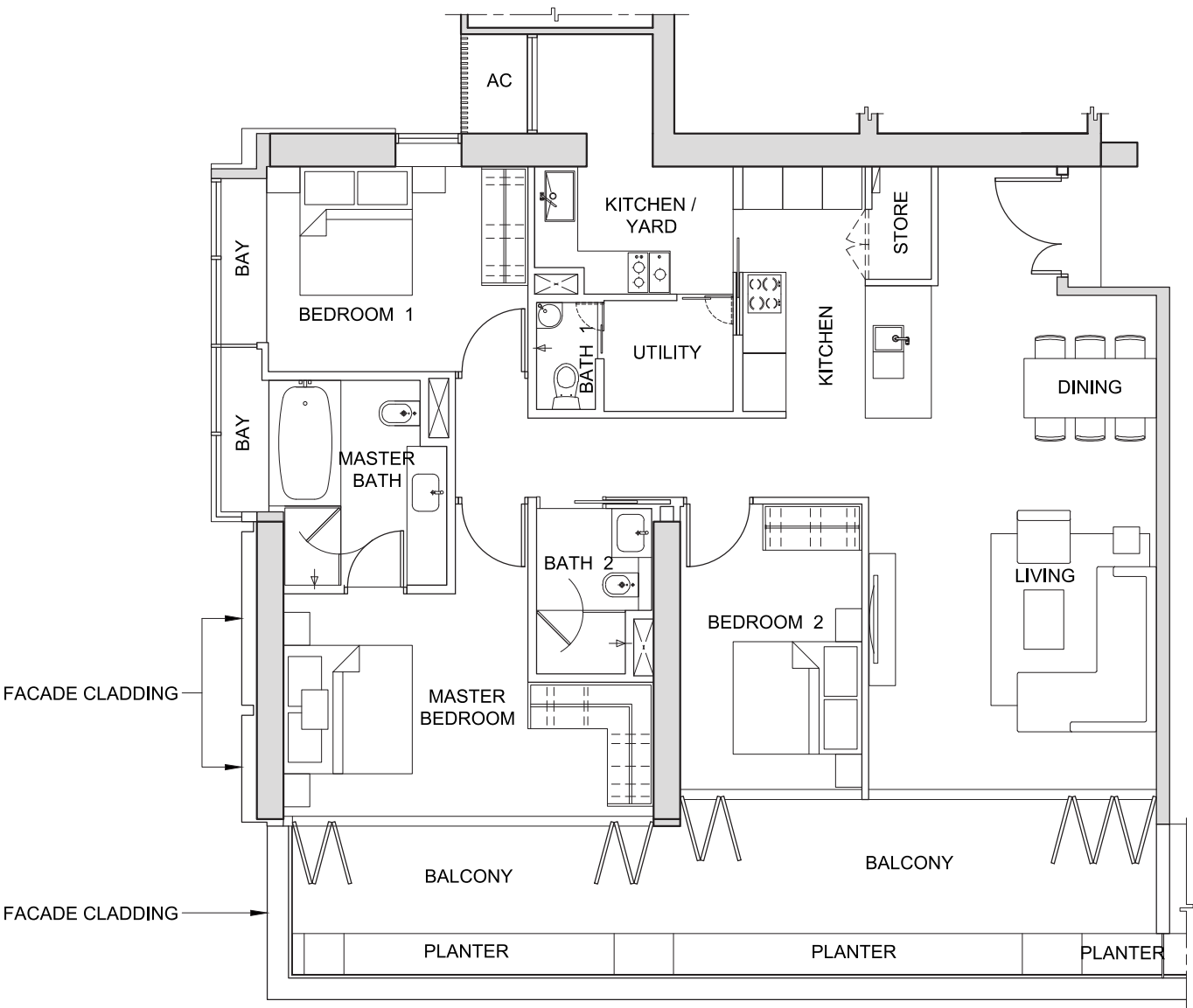
The above plans and illustrations are subject to change as may be required or approved by the relevant authorities. All measurements are estimates only and are subject to final survey.

TYPE 3J2

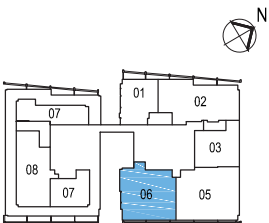
3-BEDROOM

(178 sq m / 1,916 sq ft)

#44-06



NOT TO SCALE



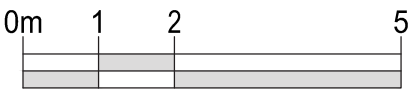
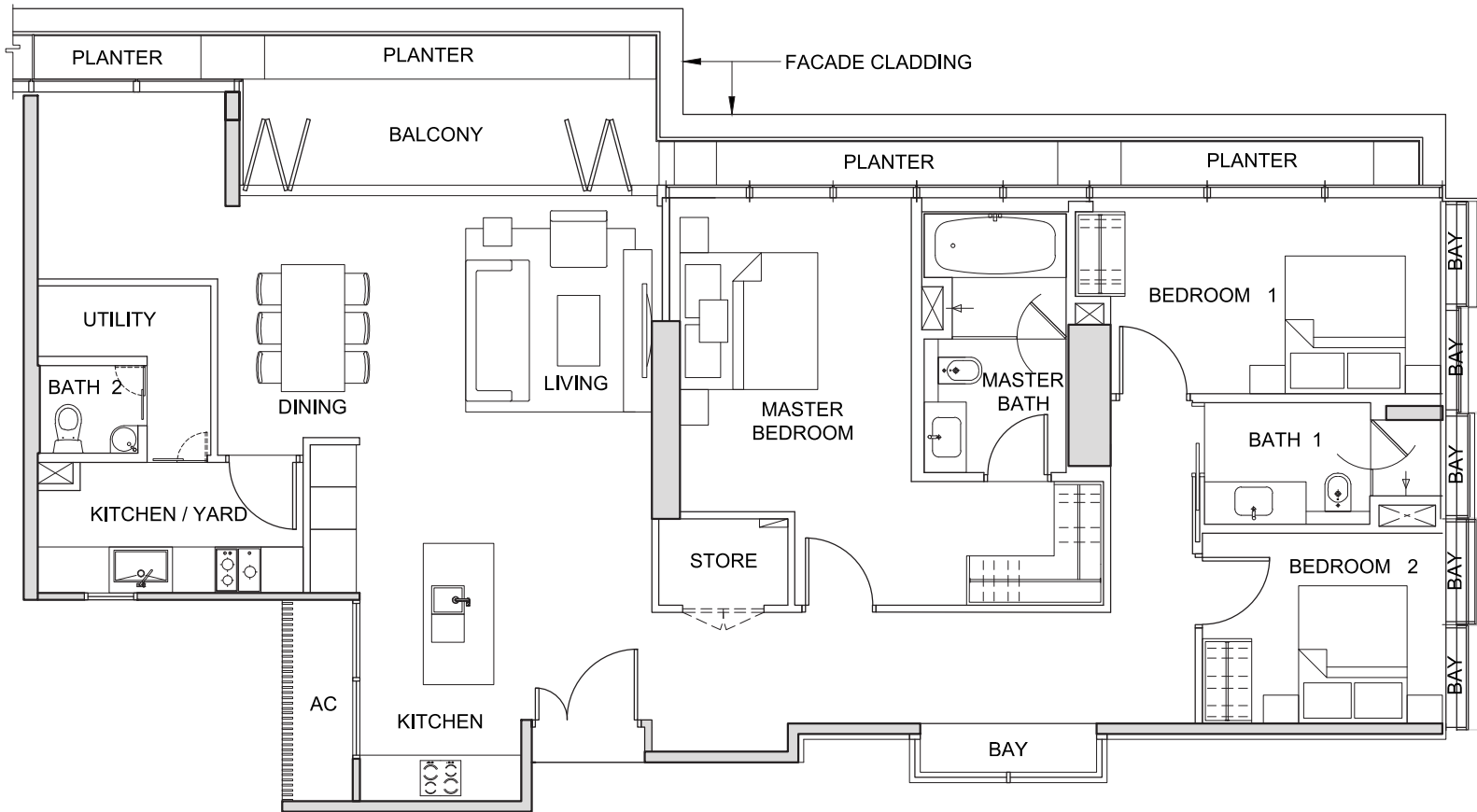
The above plans and illustrations are subject to change as may be required or approved by the relevant authorities. All measurements are estimates only and are subject to final survey.

TYPE 3K1

3-BEDROOM

(187 sq m / 2,013 sq ft)

#44-02



NOT TO SCALE



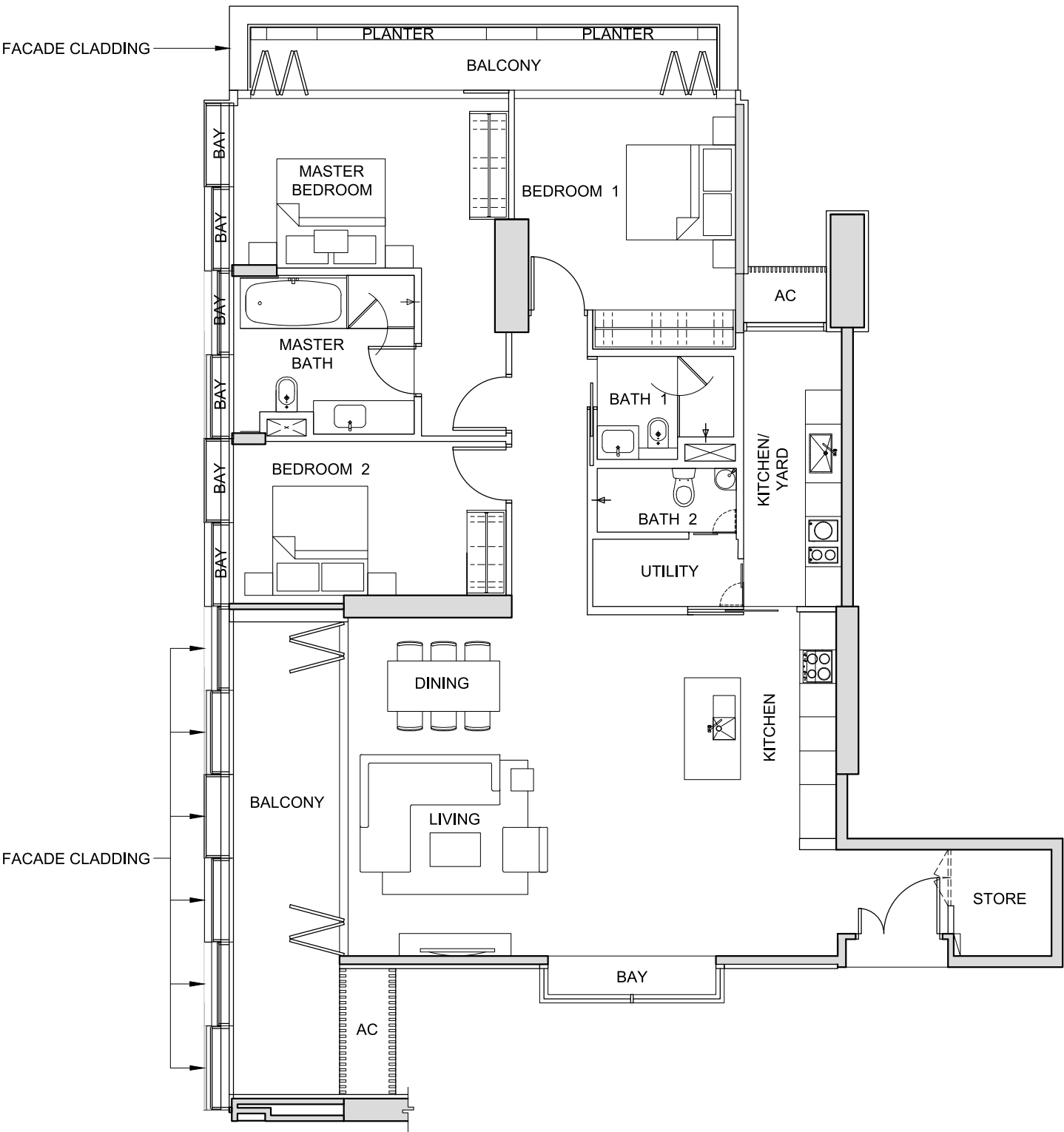
The above plans and illustrations are subject to change as may be required or approved by the relevant authorities. All measurements are estimates only and are subject to final survey.

TYPE 3L1

3-BEDROOM

(201 sq m / 2,164 sq ft)

#26-09



NOT TO SCALE



FOR LEVEL 26

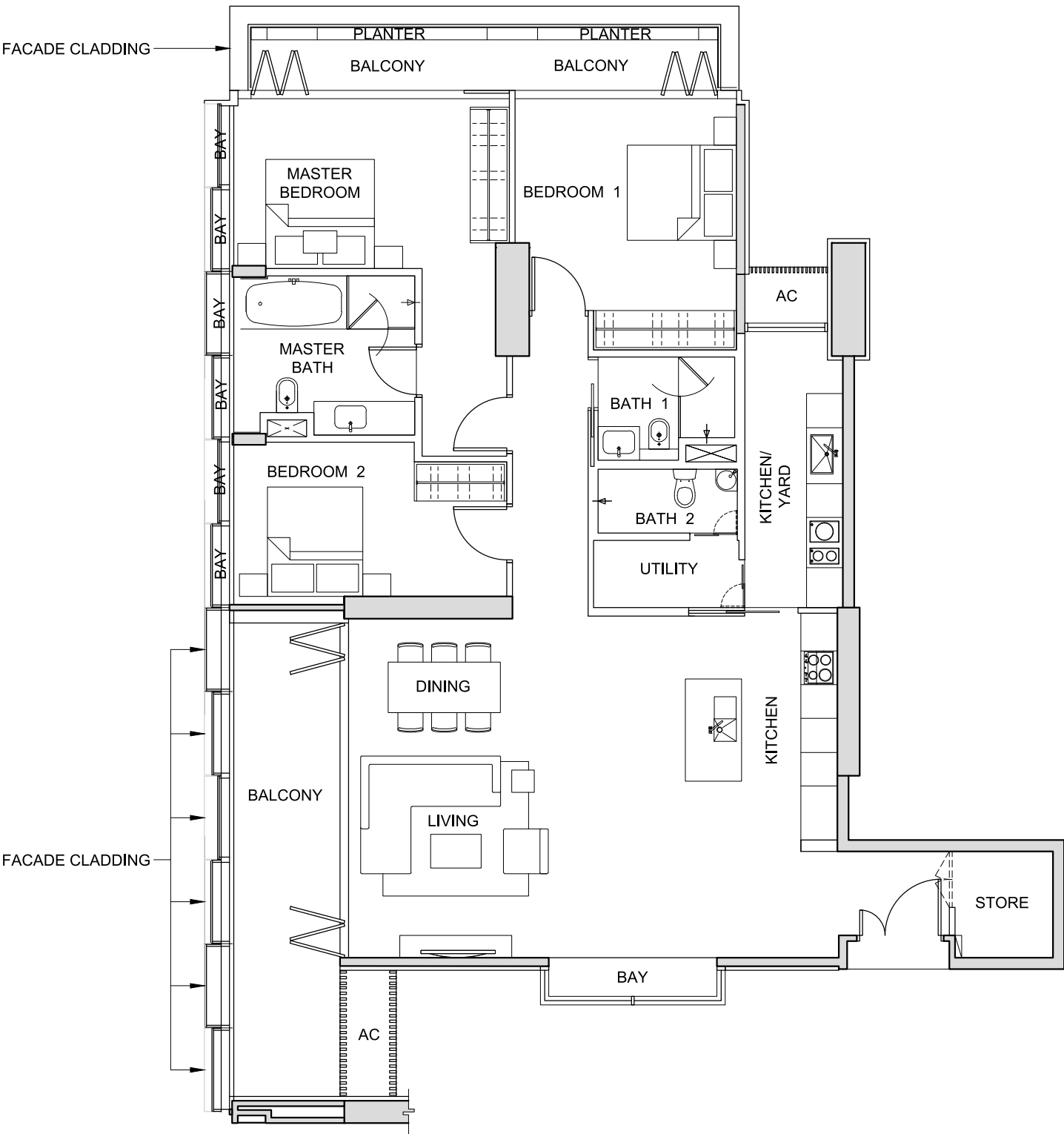
The above plans and illustrations are subject to change as may be required or approved by the relevant authorities. All measurements are estimates only and are subject to final survey.

TYPE 3L2

3-BEDROOM

(201 sq m / 2,164 sq ft)

#27-09



NOT TO SCALE



FOR LEVEL 27

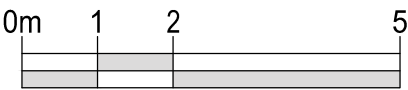
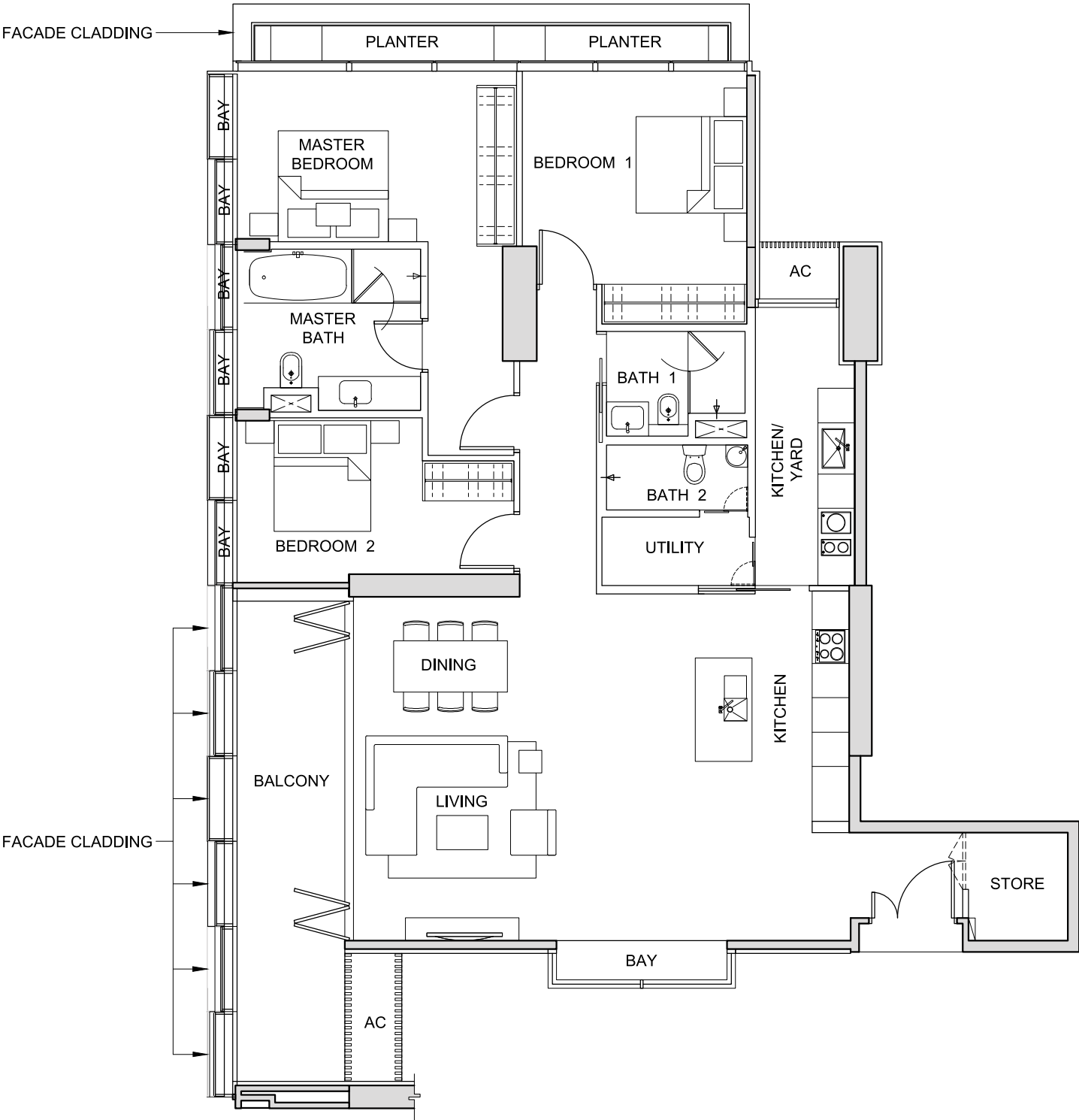
The above plans and illustrations are subject to change as may be required or approved by the relevant authorities. All measurements are estimates only and are subject to final survey.

TYPE 3L3

3-BEDROOM

(197 sq m / 2,121 sq ft)

#28-09



NOT TO SCALE



FOR LEVEL 28

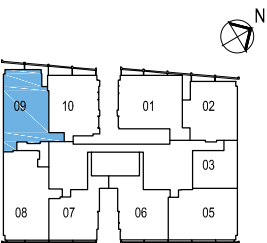
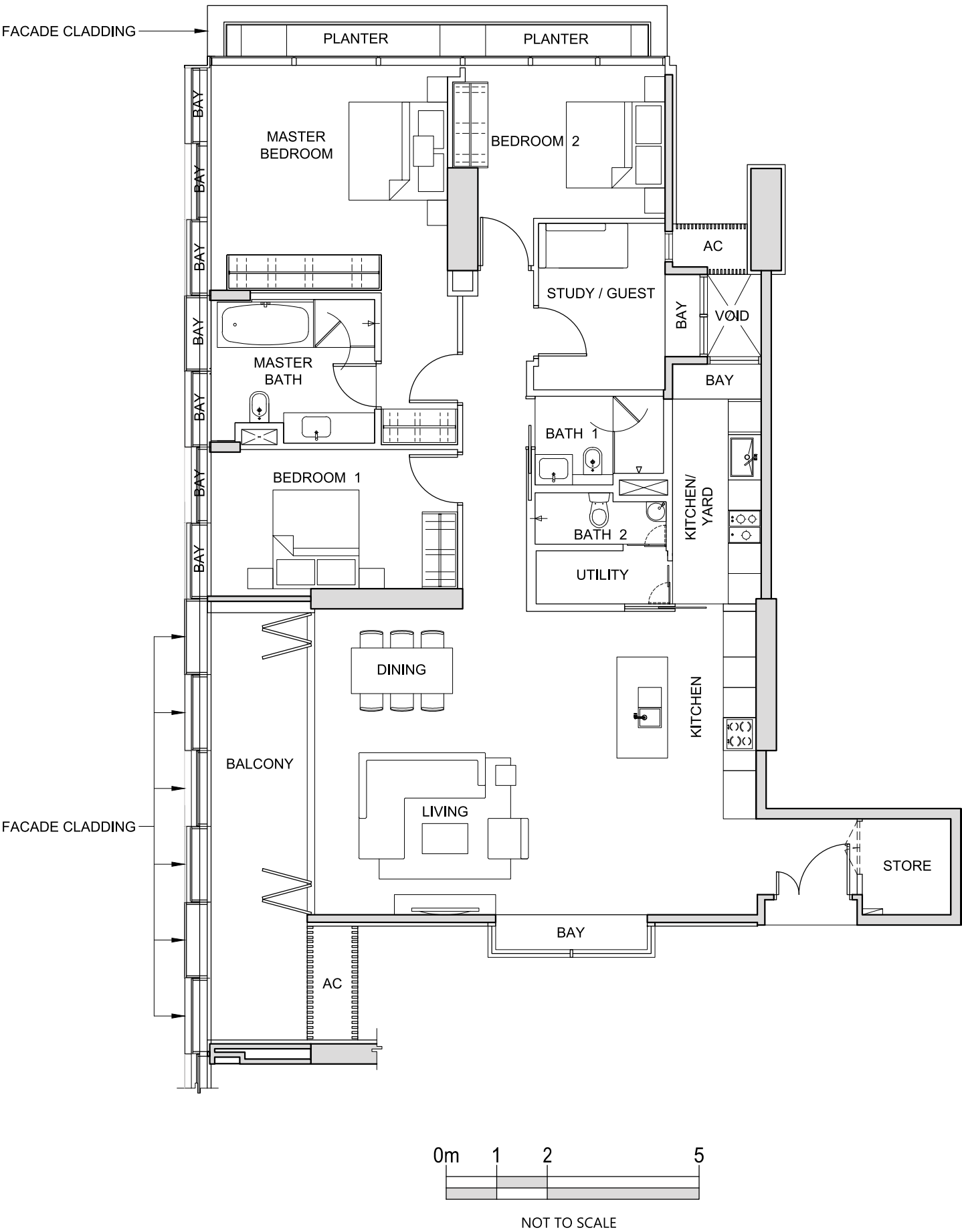
The above plans and illustrations are subject to change as may be required or approved by the relevant authorities. All measurements are estimates only and are subject to final survey.

TYPE 3M1

3-BEDROOM

(212 sq m / 2,282 sq ft)

#23-09



FOR LEVEL 23

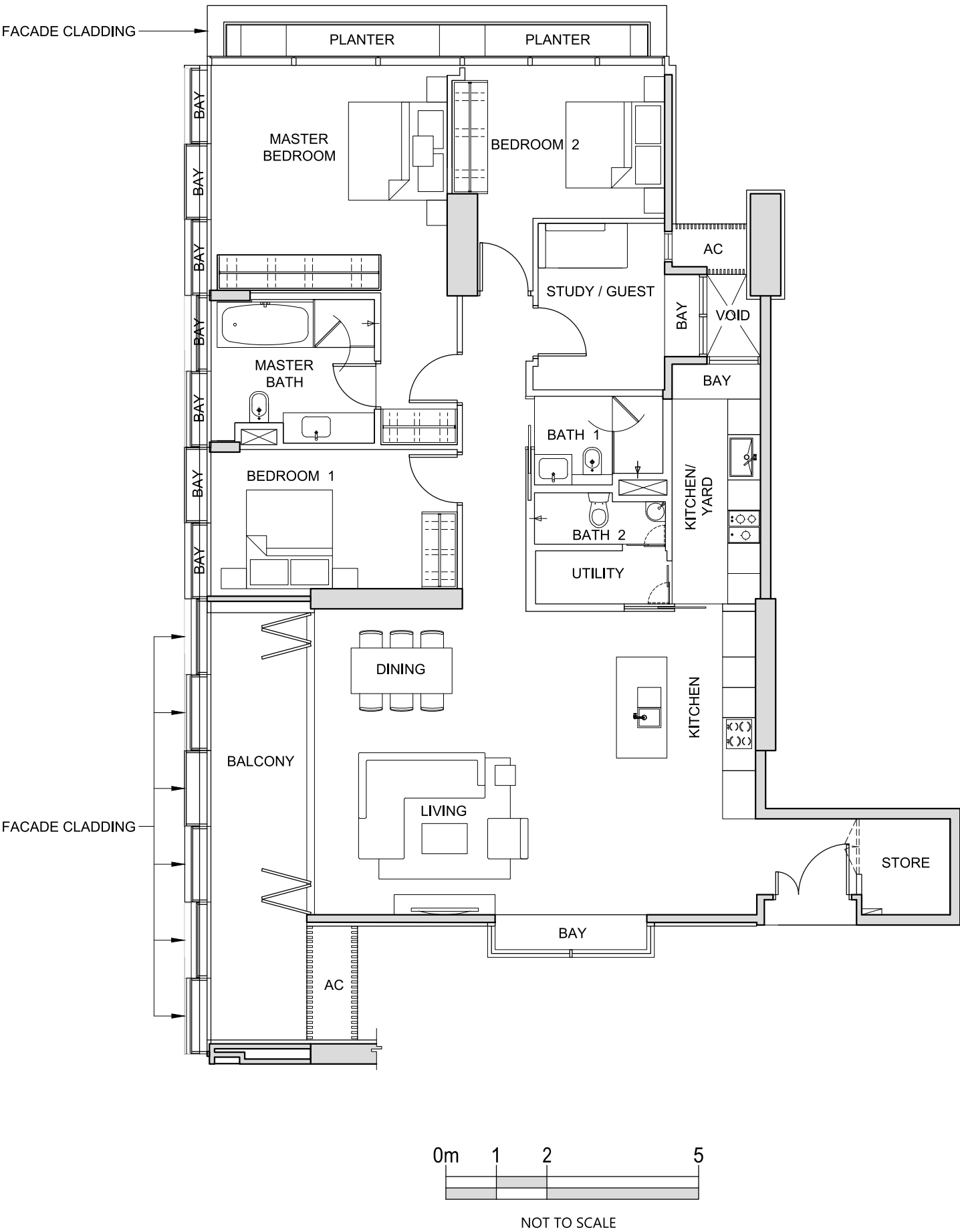
The above plans and illustrations are subject to change as may be required or approved by the relevant authorities. All measurements are estimates only and are subject to final survey.

TYPE 3M2

3-BEDROOM

(212 sq m / 2,282 sq ft)

#24-09



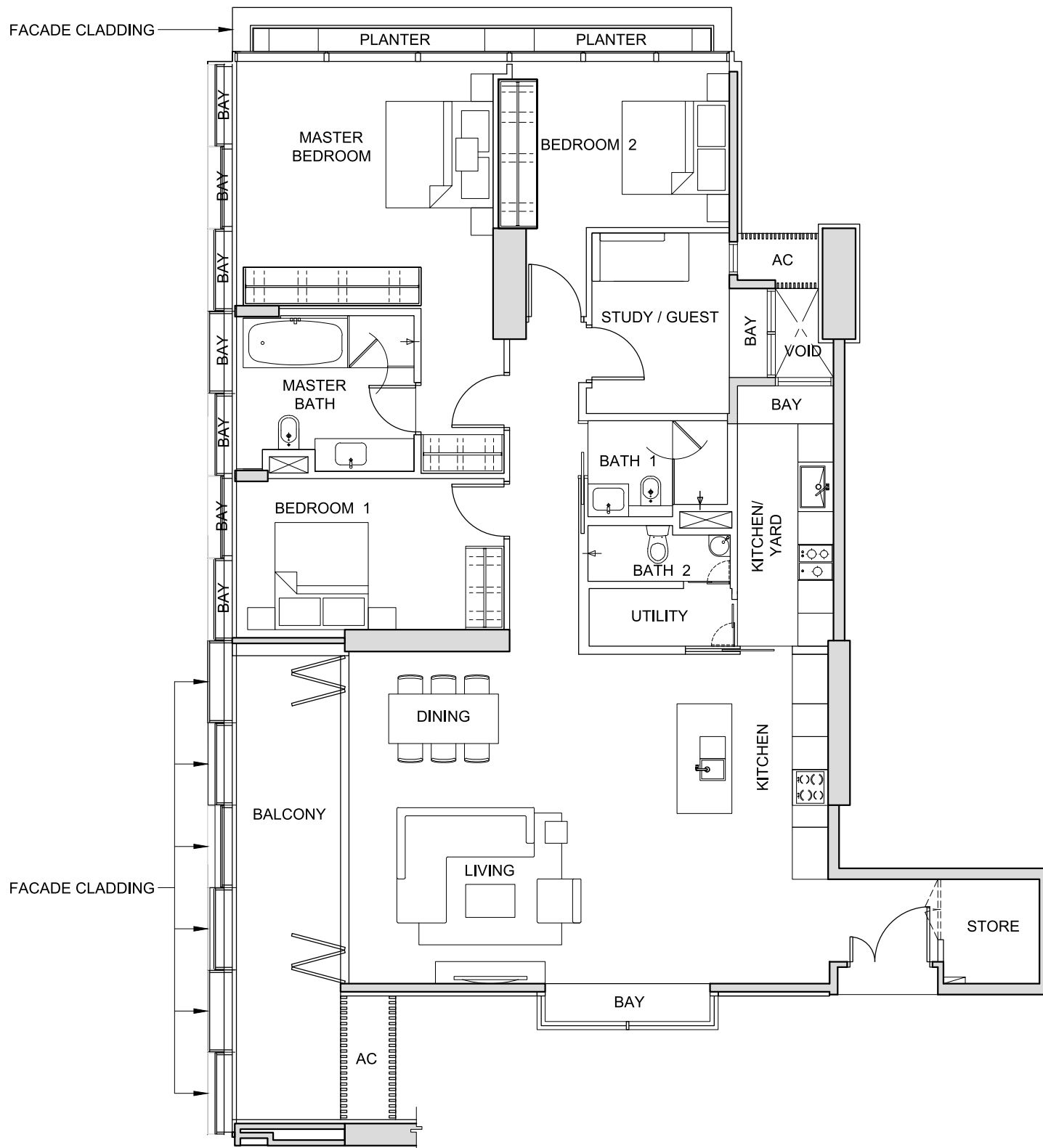
The above plans and illustrations are subject to change as may be required or approved by the relevant authorities. All measurements are estimates only and are subject to final survey.

TYPE 3M3

3-BEDROOM

(210 sq m / 2,260 sq ft)

#25-09



NOT TO SCALE



The above plans and illustrations are subject to change as may be required or approved by the relevant authorities. All measurements are estimates only and are subject to final survey.